

Safeguarding & Child Protection Policy	
Policy area	Safeguarding
Policy Author	N.Mariosa
Status	Draft/ Approved
Category	Trust Wide
Implementation Date	Autumn Term 25
Review cycle	Annual
Next review date	Autumn Term 26
Related policies & documents	<ul style="list-style-type: none"> • AI guidance • Attendance policy • Behaviour for learning • Curriculum policy • Drugs education policy • E-Safety policy • Equality policy • First aid assessment • GDPR • Health and safety • Inclusion policy • Mobile devices policy • Network policy • Parent and carers ICT acceptable use • Privacy notice for children • PSHE policy • Relationships and sex education policy • SDET complaints policy • Searching and confiscation • Staff code of conduct • Student acceptable ICT use agreement • Visitor policy • Whistleblowing policy

Document Control

Date	Version	Comments
Sept 2025	V1	Clerical amendments made
18/09/25	V2	Approved by Governors



Contents

1	Important contacts	6
2	Aims, principles and culture.....	6
2.1	Policy Statement.....	7
3	Principles and Values	7
4	Safeguarding Culture at Worthing High School	7
4.1	Children may not feel ready or know how to tell.....	9
4.2	Extra-familiar abuse.....	10
5	Legislation and statutory guidance	10
6	Definitions.....	11
7	Equality statement.....	12
8	Roles and responsibilities.....	12
8.1	All staff.....	13
8.2	The designated safeguarding lead (DSL)	14
8.3	The Governing Board.....	16
8.4	The headteacher.....	17
8.5	Virtual school heads	18
9	Confidentiality.....	18
10	Recognising abuse and taking action.....	18
10.1	If a child is suffering or likely to suffer harm, or in immediate danger.....	19
10.2	If a child makes a disclosure to you	20
10.2.1	Recognise	20
10.2.2	Respond	20
10.2.3	Report	20
10.2.4	What happens next?.....	21
10.3	If you discover that FGM has taken place or a children is at risk of FGM.....	21
10.4	If you have concerns about a child (as opposed to believing a child is suffering or likely to suffer from harm, or is in immediate danger).....	21
10.5	Early help assessment	22
10.5.1	Referral	22
10.6	If you have concerns about extremism.....	22
10.7	If you have a concern about mental health	23
10.8	Concerns about a staff member, supply teacher, volunteer or contractor	23
10.9	Allegations of abuse made against other children.....	25
10.9.1	Procedures for dealing with allegations of child-on-child abuse	25
10.9.2	Creating a supportive environment in school and minimising the risk of child-on-child abuse	27



10.10	Sharing of nudes and semi-nudes ('sexting')	29
10.10.1	Further review by the DSL	30
10.10.2	Informing parents/carers	30
10.10.3	Recording incidents	30
10.10.4	Curriculum coverage	30
11	Reporting systems for our children	31
12	Online safety and the use of mobile technology	31
13	Artificial intelligence (AI)	33
13.1	Generative AI	34
14	Notifying parents or carers	34
15	Children with special educational needs, disabilities or health issues	34
16	Children with a social worker	35
17	Looked-after and previously looked-after children	35
18	Children who are lesbian, gay, bisexual or gender questioning	35
19	Complaints and concerns about school safeguarding policies	36
19.1	Complaints against staff	36
19.2	Other complaints	36
19.3	Whistleblowing	36
20	Record-keeping	36
21	Training	37
21.1	All staff	37
22	The DSL and deputies	38
22.1	Governors	38
23	Recruitment – interview panels	38
24	Monitoring arrangements	38
Appendix 1:	types of abuse	39
24.1	Physical abuse	39
24.2	Emotional abuse	40
24.3	Indicators of emotional abuse	40
24.3.1	Developmental issues	40
24.3.2	Behaviour	40
24.3.3	Social issues	41
24.3.4	Emotional responses	41
24.4	Sexual abuse	41
24.5	Indicators of sexual abuse	41
24.5.1	Physical observations	41
24.5.2	Behavioral observations	42



24.5.3	Neglect.....	42
24.5.4	Indicators of neglect	43
24.5.5	Physical indicators of neglect.....	43
24.5.6	Behavioral indicators of neglect	43
Appendix 2:	Safer recruitment and DBS checks – policy and procedures	44
24.6	Safer recruitment policy.....	44
24.6.1	Recruitment and selection process	44
24.6.2	Advertising	44
24.7	Application forms	44
24.8	Shortlisting	44
24.9	Interview and selection	45
24.10	Pre-appointment vetting checks	45
24.11	New staff	45
24.12	Existing staff	46
24.13	Agency and third-party staff	47
24.14	Contractors.....	47
24.15	Trainee teachers.....	47
24.16	Volunteers	47
24.17	Governors.....	48
24.18	Staff working in alternative provision settings	48
24.19	Adults who supervise children on work experience	48
24.20	Children staying with host families	48
Appendix 3:	allegations of abuse made against staff	49
24.21	Allegations against staff (including low-level concerns) policy.....	49
24.21.1	Section 1: allegations that may meet the harm threshold	49
24.21.2	Suspension of the accused until the case is resolved	49
24.21.3	Definitions for outcomes of allegation investigations	50
24.21.4	Procedure for dealing with allegations.....	50
24.21.5	Timescales.....	52
24.21.6	Specific actions.....	52
24.21.7	Unsubstantiated, unfounded, false or malicious allegations	52
24.21.8	Confidentiality and information sharing.....	53
24.21.9	Record-keeping	53
24.21.10	References	53
24.21.11	Learning lessons	53
24.21.12	Non-recent allegations	54
24.21.13	Section 2: concerns that do not meet the harm threshold.....	54



24.21.14	Definition of low-level concerns.....	54
24.21.15	Sharing low-level concerns.....	55
24.21.16	Responding to low-level concerns.....	55
24.21.17	Record keeping.....	55
24.21.18	References.....	55
25	Appendix 4: specific safeguarding issues.....	56
25.1.1	Assessing adult-involved nude and semi-nude sharing incidents	56
25.1.2	Sexually motivated incidents	56
25.1.3	Financially motivated incidents	56
25.1.4	Children who are absent from education.....	57
25.1.5	Child criminal exploitation.....	58
25.1.6	Child sexual exploitation.....	58
25.1.7	Child-on-child abuse	59
25.1.8	Domestic abuse.....	60
25.1.9	Homelessness	60
25.1.10	So-called ‘honour-based’ abuse (including FGM and forced marriage).....	60
25.1.11	FGM.....	61
25.1.12	Forced marriage.....	62
25.1.13	Preventing radicalisation	62
26	Sexual violence and sexual harassment between children in schools	63
26.1.1	Serious violence	64
26.1.2	Checking the identity and suitability of visitors.....	65
26.1.3	Non-collection of children	65
26.1.4	Missing children	65
Appendix 4:	Briefing sheet for temporary and supply staff.....	66
26.2	For supply staff and those on short contracts in Worthing High School school.....	66

1 Important contacts

Role/organisation	Name
Designated safeguarding lead (DSL)	Nick Mariosa
Deputy DSLs	Lauren Haslam Adrian Cook Scott Swift Alex Simpson Claire Vilday Elizabeth Hopkins Sarah Jones Hayley Thomson
Designated Teacher for looked after children	Krystyna Daley
Senior Mental Health Leads	Nick Mariosa Marie Ben Hamda Rory Mashford
Chair of governors	Louise Davey
Safeguarding Governor	Louise Davey
West Sussex LADOs	Miriam Williams Donna Tomlinson Vic Williams Online Portal
Integrated Front Door	01403 229900
Safeguarding in Education Team	0330 222 4030 Safeguarding.education@westsussex.gov.uk Sally Arbuckle (Manager) Gabby Rodrigues Natasha Cherryman Sarah Young

2 Aims, principles and culture

The school aims to ensure that:

- Appropriate action is taken in a timely manner to safeguard and promote children's welfare



- All staff are aware of their statutory responsibilities with respect to safeguarding
- Staff are properly trained in recognising and reporting safeguarding issues

2.1 Policy Statement

‘Safeguarding and promoting the welfare of children is **everyone’s** responsibility. **Everyone** who comes into contact with children and their families has a role to play. In order to fulfil this responsibility effectively, all practitioners should make sure their approach is child centred. This means that they should consider, at all times, what is in the **best interests** of the child.’¹

- We recognize our moral and statutory responsibility to safeguard and promote the welfare of all children.
- We make every effort to provide a safe and welcoming environment underpinned by a culture of openness where both children and adults feel secure, able to talk and believe that they are being listened to.
- We maintain an attitude of “it could happen here” where safeguarding is concerned.

The purpose of this policy is to provide staff, volunteers and governors with the framework they need in order to keep children safe and secure in our school, and to inform parents and guardians how we will safeguard their children whilst they are in our care.

Specific guidance is available to staff within the procedure documents.

3 Principles and Values

- Children have a right to feel secure and cannot learn effectively unless they do so.
- All children have a right to be protected from harm.
- All staff have a key role in prevention of harm and an equal responsibility to act on any suspicion or disclosure that may indicate a child is at risk of harm, either in the school or in the community, whilst taking into account any contextual safeguarding.
- We acknowledge that it is essential that we work in partnership with other agencies that protect children and reduce risk and so we will engage in partnership working throughout the child protection process to safeguard children.
- Whilst the school will work openly with parents as far as possible, it reserves the right to contact Children’s Social Care or the police, without notifying parents if this is believed to be in the child’s best interests.
- All adults working within the school should maintain professional curiosity if they are concerned about a child.

4 Safeguarding Culture at Worthing High School

Child Protection Statement Worthing High School takes its responsibility to safeguard children extremely seriously and this school will train and empower all staff to recognise and respond effectively to protect a child who may be at risk of significant harm.

¹ Keeping Children Safe in Education – Statutory guidance for schools colleges (KCSiE)



We will ensure that all staff members in our school maintain an attitude of 'it could happen here' and feel able to raise concerns either about a child at risk or a member of staff whose behaviour may present a risk to a child.

Our school will:

- Have safeguarding at the heart of everything we do.
- Maximise opportunities to hear the voice of all of our children and young people and do all we can to understand their lived experience.
- Maximise opportunities to teach our children / young people how to keep safe both in the real and virtual world.
- Support the child development in ways that will foster security, confidence, and independence;
- Provide an environment in which children and young people feel safe, secure, valued, respected and confident.
- Recognise where children have suffered abuse and neglect, or other potentially traumatic adverse childhood experiences, this can have a lasting impact throughout childhood, adolescence and into adulthood. We also recognise it is key that staff are aware of how these children's experiences, can impact on their mental health, behaviour, and education.
- Ensure that all of our children / young people know a member of staff they can communicate with if they are worried about something.
- Where there is a safeguarding concern, governing bodies, proprietors and school or college leaders should ensure the child's wishes and feelings are taken into account when determining what action to take and what services to provide. Systems should be in place for children to express their views and give feedback. Ultimately, all systems and processes should operate with the best interests of the child at heart.
- Make sure all our staff, including volunteers know how to contact child protection agencies should they need to.
- Provide a systematic means of monitoring children known or thought to be at risk of harm, and ensure we, the school, contribute to assessments of need and support packages for those children.
- Emphasise the need for good levels of communication between all members of staff and between the school and other agencies.
- Have and regularly review, a structured procedure within the school which will be followed by all members of the school community in cases of suspected abuse.
- Develop and promote effective working relationships with other agencies, especially the Police and Children's Social Care, including Integrated Prevention & Early Help.
- Part of promoting effective working relationships, we are aware of the requirement for children and young people to have an Appropriate Adult present in certain circumstances involving the police – for example, during searches. We will be aware of Statutory guidance - [PACE Code C 2019](#) and ensure our children and young people are supported as appropriate.
- Ensure that all adults, including supply staff, contractors, and volunteers, within our school who have access to children have been recruited and checked as to their suitability in accordance with Part 3 of Keeping Children Safe in Education.
- Have in place, other, up to date policies which support safeguarding - (Please see the West Sussex schools safeguarding guidebook for a list of suggested policies.)



- Make sure all staff are aware of the systems within school which support safeguarding. We will explain this on induction together by sharing details of this policy, behaviour policy, staff code of conduct policy, the school response to children who go missing from education, and role of the Designated Safeguarding Lead.
- Whether in respect of child-on-child abuse or any other safeguarding situation, ALL of OUR STAFF will reassure the young person who reports any concerns, that they will be taken seriously and kept safe. OUR STAFF WILL NEVER give a young person the impression they are creating a problem by reporting abuse, sexual violence or sexual harassment nor should a young person ever be made to feel ashamed for making a report.
- Our staff will also understand that the location of where the incident took place will feature in any risk assessments.
- Our staff will also recognise the need to support siblings of all of those involved in any child-on child sexual violence or harassment².

Our school / college recognises the findings in Working Together to Safeguard Children 2023, where children expressed that they wanted an effective safeguarding system to be:

- vigilant: to have adults notice when things are troubling them
- understanding and actioned: to understand what is happening; to be heard and understood; and to have that understanding acted upon
- stable: to be able to develop an ongoing stable relationship of trust with those helping them
- respectful: to be treated with the expectation that they are competent rather than not
- informed and engaged: to be informed about and involved in procedures, decisions, concerns, and plans
- explained: to be informed of the outcome of assessments and decisions and reasons when their views have not met with a positive response
- supported: to be provided with support in their own right as well as a member of their family
- advocated: to be provided with advocacy to assist them in putting forward their views
- protective: to be protected against all forms of abuse and discrimination and the right to special protection and help if a refugee

We will use this information to support the training of our staff and review this and other policies as appropriate.

4.1 Children may not feel ready or know how to tell.

All our staff should be aware that children may not feel ready or know how to tell someone that they are being abused, exploited, or neglected, and/or they may not recognise their experiences as harmful. For example, children may feel embarrassed, humiliated, or being threatened. This could be due to their vulnerability, disability and/or sexual orientation or language barriers. This should not prevent staff from having a professional curiosity and speaking to the Designated Safeguarding Lead if they have concerns about a child. It is also important that staff determine how best to build trusted relationships with children and young people which facilitate communication.

² Voice of the Child – Working Together to Safeguard Children 2023



4.2 Extra-familial abuse

All of our staff, but especially the Designated Safeguarding Lead (and deputies) should consider whether children are at risk of abuse or exploitation in situations outside their families. Extrafamilial harms take a variety of different forms and children can be vulnerable to multiple harms including (but not limited to) sexual abuse (including harassment and exploitation), domestic abuse in their own intimate relationships (teenage relationship abuse), criminal exploitation, serious youth violence, county lines, and radicalisation.

5 Legislation and statutory guidance

This policy is based on the Department for Education's (DfE's) statutory guidance [Keeping Children Safe in Education \(2025\)](#) and [Working Together to Safeguard Children \(2023\)](#), the [Maintained schools governance guide](#) and [Academy trust governance guide](#). We comply with this guidance and the arrangements agreed and published by our 3 local **safeguarding partners** (see section 3).

This policy is also based on the following legislation:

- Part 3 of the schedule to the [Education \(Independent School Standards\) Regulations 2014](#), which places a duty on academies and independent schools to safeguard and promote the welfare of children at the school
- The [Children Act 1989](#) (and [2004 amendment](#)), which provides a framework for the care and protection of children
- Section 5B(11) of the Female Genital Mutilation Act 2003, as inserted by section 74 of the [Serious Crime Act 2015](#), which places a statutory duty on teachers to report to the police where they discover that female genital mutilation (FGM) appears to have been carried out on a girl under 18
- [Statutory guidance on FGM](#), which sets out responsibilities with regards to safeguarding and supporting girls affected by FGM
- The [Rehabilitation of Offenders Act 1974](#), which outlines when people with criminal convictions can work with children
- Schedule 4 of the [Safeguarding Vulnerable Groups Act 2006](#), which defines what 'regulated activity' is in relation to children
- [Statutory guidance on the Prevent duty](#), which explains schools' duties under the Counter-Terrorism and Security Act 2015 with respect to protecting people from the risk of radicalisation and extremism
- The [Human Rights Act 1998](#), which explains that being subjected to harassment, violence and/or abuse, including that of a sexual nature, may breach any or all of the rights which apply to individuals under the [European Convention on Human Rights](#) (ECHR)
- [The Equality Act 2010](#), which makes it unlawful to discriminate against people regarding particular protected characteristics (including age, disability, gender reassignment, marriage and civil partnership, race, religion or belief, sex and sexual orientation). This means our governors and headteacher should carefully consider how they are supporting their children with regard to these characteristics. The Act allows our school to take positive action to deal with particular disadvantages affecting a specific group of children (where we can show it's proportionate). This includes a duty to make reasonable adjustments for disabled children. For example, it could include taking positive action to support girls where there's evidence that they're being disproportionately subjected to sexual violence or harassment
- [The Public Sector Equality Duty \(PSED\)](#), which explains that we must have due regard to eliminating unlawful discrimination, harassment and victimisation. The PSED helps us to focus



on key issues of concern and how to improve children outcomes. Some children may be more at risk of harm from issues such as: sexual violence, homophobic, biphobic or transphobic bullying or racial discrimination

6 Definitions

Safeguarding and promoting the welfare of children means:

- Providing help and support to meet the needs of children as soon as problems emerge
- Protecting children from maltreatment whether that is within or outside the home, including online
- Preventing impairment of children's mental and physical health or development
- Ensuring that children grow up in circumstances consistent with the provision of safe and effective care
- Taking action to enable all children to have the best outcomes
- **Child protection** is part of this definition and refers to activities undertaken to protect specific children who are suspected to be suffering, or likely to suffer, significant harm. This includes harm that occurs inside or outside the home, including online.
- **Abuse** is a form of maltreatment of a child, and may involve inflicting harm or failing to act to prevent harm. Appendix 1 explains the different types of abuse.
- **Neglect** is a form of abuse and is the persistent failure to meet a child's basic physical and/or psychological needs, likely to result in the serious impairment of the child's health or development. Appendix 1 defines neglect in more detail.
- **Sharing of nudes and semi-nudes** (also known as sexting or youth-produced sexual imagery) is where children share nude or semi-nude images, videos or live streams. This also includes pseudo-images that are computer-generated images that otherwise appear to be a photograph or video.
- **Children** includes everyone under the age of 18. On the whole, this will apply to children of our school; however, the policy will extend to visiting children and students from other establishments.
- The term **staff** applies to all those working for or on behalf of the school, full time or part time, in either a paid or voluntary capacity. This also includes parents and governors.
- The following 3 **safeguarding partners** are identified in Keeping Children Safe in Education (and defined in the Children Act 2004, as amended by chapter 2 of the Children and Social Work Act 2017). They will make arrangements to work together to safeguard and promote the welfare of local children, including identifying and responding to their needs:
 - The local authority (LA)
 - Integrated care boards (previously known as clinical commissioning groups) for an area within the LA
 - The chief officer of police for an area in the LA area
- **Victim** is a widely understood and recognised term, but we understand that not everyone who has been subjected to abuse considers themselves a victim, or would want to be described that way. When managing an incident, we will be prepared to use any term that the child involved feels most comfortable with.
- **Parent** refers to birth parents and other adults in a parenting role for example adoptive parents, step-parents, guardians and foster carers.

- **Alleged perpetrator(s)** and **perpetrator(s)** are widely used and recognised terms. However, we will think carefully about what terminology we use (especially in front of children) as, in some cases, abusive behaviour can be harmful to the perpetrator too. We will decide what's appropriate and which terms to use on a case-by-case basis.

7 Equality statement

Some children have an increased risk of abuse, both online and offline, and additional barriers can exist for some children with respect to recognising or disclosing it. We are committed to anti-discriminatory practice and recognise children's diverse circumstances. We ensure that all children have the same protection, regardless of any barriers they may face.

We give special consideration to children who:

- Have special educational needs and disabilities (SEND) or health conditions (see section 10)
- Are young carers
- May experience discrimination due to their race, ethnicity, religion, gender identification or sexuality
- Have English as an additional language (EAL)
- Are known to be living in difficult situations – for example, temporary accommodation or where there are issues such as substance abuse or domestic violence
- Are at risk of female genital mutilation (FGM), sexual exploitation, forced marriage, or radicalisation
- Are asylum seekers
- Are at risk due to either their own or a family member's mental health needs
- Are looked after or previously looked after (see section 16)
- Are missing or absent from education for prolonged periods and/or frequently
- Whose parent/carer has expressed an intention to remove them from school to be home educated

8 Roles and responsibilities

Safeguarding and child protection is **everyone's** responsibility. This policy applies to all staff, volunteers and governors in the school and is consistent with the procedures of the 3 safeguarding partners. Our policy and procedures also apply to extended school and off-site activities.

The school plays a crucial role in preventative education. This is in the context of a whole-school approach to preparing children for life in modern Britain, and a culture of zero tolerance of sexism, misogyny/misandry, homophobia, biphobia, transphobia and sexual violence/harassment. This will be underpinned by our:

- Behaviour policy
- Pastoral support system

Planned programme of relationships, sex and health education (RSHE), which is inclusive and delivered regularly, tackling issues such as:

- Healthy and respectful relationships
- Boundaries and consent
- Stereotyping, prejudice and equality



- Body confidence and self-esteem
- How to recognise an abusive relationship (including coercive and controlling behaviour)
- The concepts of, and laws relating to, sexual consent, sexual exploitation, abuse, grooming, coercion, harassment, rape, domestic abuse, so-called honour-based violence such as forced marriage and FGM and how to access support
- What constitutes sexual harassment and sexual violence and why they're always unacceptable

All staff in our school are expected to be aware of the signs and symptoms of abuse and must be able to respond appropriately.

Any update in national or local guidance will be shared with all staff in briefings and then captured in the next whole school training. This policy will be updated during the year to reflect any changes brought about by new guidance. Governor training is provided as required by KCSiE 2025.

8.1 All staff

Staff who work directly with children are expected to read at least part 1 of Keeping Children Safe in Education (KCSiE) and for staff not directly working with children annex A of KCSiE (a condensed version of part 1).

All staff will:

- Provide a declaration at the beginning of each academic year to say that they have reviewed the guidance
- Establish and maintain an environment where children feel secure, are encouraged to talk and are listened to.
- Ensure children know that there are adults in the school who they can approach if they are worried or have concerns.
- Plan opportunities within the curriculum for children to develop skills they need to recognise, assess and manage risk appropriately and keep themselves safe.
- Attend training in order to be aware of and be alert to the signs of abuse.
- Maintain an attitude of "it could happen here" with regards to safeguarding.
- Be aware that mental health problems can, in some cases, be an indicator that a child has suffered or is at risk of suffering abuse, neglect or exploitation.
- Recognise that abuse, neglect, or other adverse childhood experiences, can have an impact on the mental health, behaviour and education of children.
- Record their concerns if they are worried that a child is being abused and report these to the DSL as soon as practicable that day. If the DSL is not contactable immediately a DDSL should be informed.
- Be prepared to refer directly to social care, and the police if appropriate, if there is a risk of significant harm and the DSL or DDSL is not available.
- Follow the allegations procedures (appendix 3) if the disclosure is an allegation against a member of staff.
- Follow the procedures set out by the WSSCP and take account of guidance issued by the DfE.
- Support children in line with their child protection plan.
- Treat information with confidentiality but never promise to "keep a secret".

- Notify the DSL or DDSL of any child on a child protection plan or child in need plan who has unexplained absence.
- Have an understanding of 'Early Help' and be prepared to identify and support children who may benefit from this intervention.
- Liaise with other agencies that support children and provide early help.
- Ensure they know who the DSL and DDSL are and know how to contact them.
- Have an awareness of the Child Protection Policy, the Behaviour Policy, the Staff Behaviour Policy (or Code of Conduct), child on child abuse procedures, the safeguarding response for children who go missing or are absent from education and the role of the DSL.

All staff will be aware of:

- Our systems that support safeguarding, including this child protection and safeguarding policy, the staff code of conduct, the role and identity of the designated safeguarding lead (DSL) and deputies, the behaviour policy, the online safety policy. and the safeguarding response to children who go missing from education/who are absent from education. The early help assessment process and their role in it, including identifying emerging problems, liaising with the DSL, and sharing information with other professionals to support early identification and assessment
- The process for making referrals to local authority children's social care and for statutory assessments that may follow a referral, including the role they might be expected to play
- What to do if they identify a safeguarding issue or a child tells them they are being abused or neglected, including specific issues such as FGM, and how to maintain an appropriate level of confidentiality while liaising with relevant professionals
- The signs of different types of abuse, neglect and exploitation, including domestic and sexual abuse (including controlling and coercive behaviour, as well as parental conflict that is frequent, intense, and unresolved), as well as specific safeguarding issues, such as child-on-child abuse, grooming, child sexual exploitation (CSE), child criminal exploitation (CCE), indicators of being at risk from or involved with serious violent crime, FGM, radicalisation and serious violence (including that linked to county lines)
- New and emerging threats, including online harm, grooming, sexual exploitation, criminal exploitation, radicalisation, and the role of technology and social media in presenting harm
- The importance of reassuring victims that they are being taken seriously and that they will be supported and kept safe
- The fact that children can be at risk of harm inside and outside of their home, at school and online
- The fact that children who are (or who are perceived to be) lesbian, gay, bisexual or gender questioning (LGBTQ+) can be targeted by other children
- That a child and their family may be experiencing multiple needs at the same time
- What to look for to identify children who need help or protection

Section 16 and appendix 4 of this policy outline in more detail how staff are supported to do this.

8.2 The designated safeguarding lead (DSL)

The DSL is a member of the senior leadership team. Our DSL is Nick Mariosa-Assistant Headteacher. The DSL takes lead responsibility for child protection and wider safeguarding in the school. This includes online safety, and understanding our filtering and monitoring processes on school devices and school networks to keep children safe online.



During term time, the DSL will be available during school hours for staff to discuss any safeguarding concerns.

The DSL can also be contacted out of school hours by email.

When the DSL is absent, the deputies will act as cover:

- Lauren Haslam
- Adrian Cook
- Scott Swift
- Alex Simpson
- Claire Vilday
- Elizabeth Hopkins
- Sarah Jones
- Hayley Thomson

The DSL will be given the time, funding, training, resources and support to:

- Provide advice and support to other staff on child welfare and child protection matters
- Take part in strategy discussions and inter-agency meetings and/or support other staff to do so
- Contribute to the assessment of children
- Refer suspected cases, as appropriate, to the relevant body (local authority children's social care, Channel programme, Disclosure and Barring Service (DBS), and/or police), and support staff who make such referrals directly
- Have a good understanding of harmful sexual behaviour
- Have a good understanding of the filtering and monitoring systems and processes in place at our school

Make sure that staff have appropriate Prevent training and induction

In addition to the role of all staff and the senior management team, the DSL will also:

- Refer cases to social care, and the police where appropriate, in a timely manner avoiding any delay that could place the child at more risk.
- Assist the Governing Body in fulfilling their safeguarding responsibilities set out in legislation and statutory guidance.
- Attend appropriate training and demonstrate evidence of continuing professional development to carry out the role.
- Ensure every member of staff knows who the DSL and the Deputy are, have an awareness of the DSL role and know how to contact them.
- Ensure all staff and volunteers understand their responsibilities in being alert to the signs of abuse and their responsibility for referring any concerns about a child to the DSL and concerns about an adult to the headteacher.
- Ensure that those staff that need to know, are aware of those children who have experienced, or are experiencing abuse in order to promote their educational outcomes and provide the appropriate support.
- Ensure whole school training occurs regularly with at least annual updates so that staff and volunteers can fulfil their responsibilities knowledgeably.



- Ensure any members of staff joining the school outside of the agreed training schedule receive induction training prior to the commencement of their duties.
- Keep records of child protection concerns securely and separate from the main children file and use these records to support the assessment and likelihood of risk.
- Ensure that safeguarding records are transferred accordingly (separate from children files) and in a timely fashion when a child transfers school, including in-year transfers.
- Ensure that where a children transfers school and is on a child protection plan or is a child looked after, their information is passed to the new school immediately and that the child's social worker is informed. Consideration is given to a transition meeting prior to moving if the case is complex or on-going.
- Be aware of the training opportunities and briefings provided by WSSCP to ensure staff are aware of the latest local guidance on safeguarding.
- Develop, implement and review procedures in the school that enable the identification and reporting of all cases, or suspected cases, of abuse.
- Meet any other expectations set out for DSLs in KCSiE 2025
- The full responsibilities of the DSL and deputies are set out in their job description.
- Contribute to inter-agency working in line with 'Working Together to Safeguard Children 2023 guidance'
- Provide a co-ordinated offer of early help when additional needs of children are identified
- Ensure staff are alert to the various factors that can increase the need for early help (*para 18 KCSiE 2024*)
- Working with Children's Social Care, support their assessment and planning processes including the school's attendance at conference and core group meetings.
- Carry out tasks delegated by the governing body such as training of staff, safer recruitment and maintaining a single central register.

Provide support and advice on all matters pertaining to safeguarding and child protection to all staff regardless of their position within the school.

Treat any information shared by staff or children with respect and follow agreed policies and procedures.

8.3 The Governing Board

The Governing Board will:

- Facilitate a whole-school approach to safeguarding, ensuring that safeguarding and child protection are at the forefront of, and underpin, all relevant aspects of process and policy development
- Evaluate and approve this policy at each review, ensuring it complies with the law, and hold the headteacher to account for its implementation
- Be aware of its obligations under the Human Rights Act 1998, the Equality Act 2010 (including the Public Sector Equality Duty), and our school's local multi-agency safeguarding arrangements
- Appoint a link governor to monitor the effectiveness of this policy in conjunction with the full governing board. This is always a different person from the DSL

- Ensure all staff undergo safeguarding and child protection training, including online safety, and that such training is regularly updated and is in line with advice from the safeguarding partners
- Ensure that the school has appropriate filtering and monitoring systems in place, and review their effectiveness. This includes:
- Making sure that the leadership team and staff are aware of the provisions in place, and that they understand their expectations, roles and responsibilities around filtering and monitoring as part of safeguarding training
- Review the [DfE's filtering and monitoring standards](#), and discussing with IT staff and service providers what needs to be done to support the school in meeting these standards

Make sure:

- The DSL has the appropriate status and authority to carry out their job, including additional time, funding, training, resources and support
- Online safety is a running and interrelated theme within the whole-school approach to safeguarding and related policies
- The DSL has lead authority for safeguarding, including online safety and understanding the filtering and monitoring systems and processes in place
- The school has procedures to manage any safeguarding concerns (no matter how small) or allegations that do not meet the harm threshold (low-level concerns) about staff members (including supply staff, volunteers and contractors). Appendix 3 of this policy covers this procedure
- That this policy reflects that children with SEND, or certain medical or physical health conditions, can face additional barriers to any abuse or neglect being recognised
- Where another body is providing services or activities (regardless of whether or not the children who attend these services/activities are children on the school roll):
- Seek assurance that the other body has appropriate safeguarding and child protection policies/procedures in place, and inspect them if needed
- Make sure there are arrangements for the body to liaise with the school about safeguarding arrangements, where appropriate
- Make sure that safeguarding requirements are a condition of using the school premises, and that any agreement to use the premises would be terminated if the other body fails to comply

The chair of governors will act as the 'case manager' in the event that an allegation of abuse is made against the headteacher, where appropriate (see appendix 3).

All governors will read Keeping Children Safe in Education in its entirety.

Section 15 of this policy has information on how governors are supported to fulfil their role.

8.4 The headteacher

The headteacher is responsible for the implementation of this policy, including:

- Ensuring that staff (including temporary staff) and volunteers:
 - Are informed of our systems that support safeguarding, including this policy, as part of their induction
 - Understand and follow the procedures included in this policy, particularly those concerning referrals of cases of suspected abuse and neglect



- Communicating this policy to parents/carers when their child joins the school and via the school website
- Ensuring that the DSL has appropriate time, funding, training and resources, and that there is always adequate cover if the DSL is absent
- Acting as the 'case manager' in the event of an allegation of abuse made against another member of staff or volunteer, where appropriate (see appendix 3)
- Making decisions regarding all low-level concerns, though they may wish to collaborate with the DSL on this
- Ensure that allegations or concerns against staff are dealt with in accordance with guidance from Department for Education (DfE) and the West Sussex Safeguarding Children Partnership (WSSCP) procedures.
- Determine if a concern about a member of staff is a 'low level concern' or an allegation (See Keeping Children Safe in Education 2025 Part 4 section 1 paragraph 359).

8.5 Virtual school heads

Virtual school heads (VSHs) have a non-statutory responsibility for the strategic oversight of the educational attendance, attainment and progress of children with a social worker.

VSHs also have a non-statutory responsibility to promote the educational achievement of children in kinship care (children who live with a relative or close family friend).

They should also identify and engage with key professionals, e.g. DSLs, special educational needs co-ordinators (SENCOs), social workers, mental health leads and others.

9 Confidentiality

- We maintain that all matters relating to child protection are to be treated as confidential and only shared as per the 'Information Sharing Advice for Practitioners' (DfE 2024) guidance
- There is a lawful basis for child protection concerns to be shared with agencies who have a statutory duty for child protection.
- Information will be shared with individuals within the school who 'need to know'.
- All staff are aware that they cannot promise a child to keep a disclosure confidential.
- Confidentiality is also addressed in this policy with respect to record-keeping in section 19, and allegations of abuse against staff in appendix 3

10 Recognising abuse and taking action

All staff are expected to be able to identify and recognise all forms of abuse, neglect and exploitation and shall be alert to the potential need for early help for a child who:

- Has a disability
- Has special educational needs (whether or not they have a statutory education health and care (EHC) plan)
- Is a young carer
- Is bereaved



- Is showing signs of being drawn into anti-social or criminal behaviour, including being affected by gangs and county lines and organised crime groups and/or serious violence, including knife crime
- Is frequently missing/goes missing from education, care or home
- Is at risk of modern slavery, trafficking, sexual and/or criminal exploitation
- Is at risk of being radicalised or exploited
- Is viewing problematic and/or inappropriate online content (for example, linked to violence), or developing inappropriate relationships online
- Is in a family circumstance presenting challenges for the child, such as drug and alcohol misuse, adult mental health issues and domestic abuse
- Is misusing drugs or alcohol
- Is suffering from mental ill health
- Has returned home to their family from care
- Is at risk of so-called 'honour'-based abuse such as female genital mutilation (FGM) or forced marriage
- Is a privately fostered child
- Has a parent or carer in custody or is affected by parental offending
- Is missing education, or persistently absent from school, or not in receipt of full-time education
- Has experienced multiple suspensions and is at risk of, or has been permanently excluded

The following procedures apply to all staff working in the school and will be covered by training to enable staff to understand their role and responsibility.

The aim of our procedures is to provide a robust framework which enables staff to take appropriate action when they are concerned that a child is being harmed or is at risk of harm.

The prime concern at all stages must be for the interests and safety of the child. Where there is a conflict of interest between the child and an adult, the interests of the child must be paramount.

All staff are aware that very young children, those with disabilities, special needs, certain medical conditions or with language deficit/English as a second language may have more difficulty in communicating concerns or feelings. They may be more likely to communicate concerns with behaviours rather than words. Additionally, staff will question the cause of knocks and bumps in children who have limited mobility, which will include children (for example younger siblings) visiting the site in addition to children.

10.1 If a child is suffering or likely to suffer harm, or in immediate danger

If you believe a child is suffering or likely to suffer from harm, or is in immediate danger **instantly** seek the DSL or DDSs who can support with making a referral to the local authority children's social care and/or the police. If they are unavailable make a referral to local authority children's social care ([Request support or raise concern about a child](#)) and/or the police **immediately**. **Anyone can make a referral.**

You can also seek advice at any time from the NSPCC helpline on 0808 800 500.

Tell the DSL (see section 2) as soon as possible if you make a referral directly. Write this up on CPOMS.

Following any concerns raised to the DSL, the DSL will assess the information and consider if significant harm has happened or there is a risk that it may happen. If the evidence suggests the threshold of



significant harm, or risk of significant harm has been reached, or if it is not clear if the threshold is met, the DSL will contact Children's Social Care and, if appropriate, the police if it is in keeping with the National Police Chiefs Council "[When to call the Police](#)" guidance. If the DSL or DDSL is not available or there are immediate concerns, the staff member will refer directly to Children's Social Care and the police if appropriate. We will use the guidance from NPCC to determine when to contact the police.

Generally, the DSL will inform the parents prior to making a referral. However, there are situations where this may not be possible or appropriate, particularly when informing parents, may place the child at further risk

N.B. The exception to this process will be in those cases of known FGM where there is a mandatory requirement for the teacher to report directly to the police. The DSL should also be made aware.

10.2 If a child makes a disclosure to you

If a child discloses a safeguarding issue to you, you should; Recognise, Respond and Report

10.2.1 Recognise

- Listen to and believe them.
- Take them seriously.
- Reassure them you could say 'I am sorry this has happened', 'I am listening to you', 'We are going to do something together to get help.'

10.2.2 Respond

- Allow them time to talk freely and do not ask leading questions
- Stay calm and do not show that you are shocked or upset
- Do not ask them why this happened.
- Tell the child they have done the right thing in telling you. Do not tell them they should have told you sooner
- Make a note of what has been said as soon as possible
- Explain what will happen next and that you will have to pass this information on.
- Do not promise to keep it a secret

10.2.3 Report

- Write up your conversation on CPOMS as soon as possible in the child's own words. Stick to the facts, and do not put your own judgement on it
- Alternatively, if appropriate, make a referral to local authority children's social care and/or the police directly (see section 10.1), and tell the DSL as soon as possible that you have done so.

Aside from these people, do not disclose the information to anyone else unless told to do so by a relevant authority involved in the safeguarding process

Bear in mind that some children may:

- Not feel ready, or know how to tell someone that they are being abused, exploited or neglected
- Not recognise their experiences as harmful
- Feel embarrassed, humiliated or threatened. This could be due to their vulnerability, disability, sexual orientation and/or language barriers

- Have communication difficulties and for those preferred language is not English it is important to communicate with them in a way that is appropriate to their age, understanding and preferred communication method.

10.2.4 What happens next?

It is important that concerns are followed up and it is everyone's responsibility to ensure that they are. The member of staff should be informed by the DSL that action has been taken. The staff member can be proactive in seeking this out.

If a staff member believes that their concerns have not been dealt with effectively or that the child remains at risk, they should initially ask the DSL to reconsider ensuring that the risks are understood. If this does not result in a satisfactory outcome, or the DSL rationale appears to miss the risk to the child, then the Whistleblowing procedures of the school should be followed. If the DSL is unhappy with the response from Children Social Care, they should consider following the WSSCP escalation protocol, beginning with a manager to manager conversation.

Receiving a disclosure can be upsetting for the member of staff and schools should have a procedure for supporting them after the disclosure. This might include reassurance that they have followed the procedure correctly and that their swift actions will enable the allegations to be handled appropriately. For some staff, use of an employee-based counselling service may be appropriate

10.3 If you discover that FGM has taken place or a children is at risk of FGM

Keeping Children Safe in Education explains that FGM comprises "all procedures involving partial or total removal of the external female genitalia, or other injury to the female genital organs".

FGM is illegal in the UK and a form of child abuse with long-lasting, harmful consequences. It is also known as 'female genital cutting' 'circumcision' or 'initiation'.

Possible indicators that a children has already been subjected to FGM, and factors that suggest a children may be at risk, are set out in appendix 4 of this policy.

Any teacher who either:

- Is informed by a girl under 18 that an act of FGM has been carried out on her; or
- Observes physical signs which appear to show that an act of FGM has been carried out on a girl under 18 and they have no reason to believe that the act was necessary for the girl's physical or mental health or for purposes connected with labour or birth

Must immediately report this to the police, personally. This is a mandatory statutory duty, and teachers will face disciplinary sanctions for failing to meet it.

Unless they have been specifically told not to, they should also discuss the case with the DSL and involve local authority children's social care as appropriate.

Any other member of staff who discovers that an act of FGM appears to have been carried out on a children under 18 must speak to the DSL and follow our local safeguarding procedures.

The duty for teachers mentioned above does not apply in cases where a children is at risk of FGM or FGM is suspected but is not known to have been carried out. Staff should not examine children.

Any member of staff who suspects a children is at risk of FGM or suspects that FGM has been carried out should speak to the DSL and follow our local safeguarding procedures.

10.4 If you have concerns about a child (as opposed to believing a child is suffering or likely to suffer from harm, or is in immediate danger)

- Make an initial record of the information on CPOMS.

- The DSL will consider if there is a requirement for immediate medical intervention. Urgent medical attention should not be delayed if the DSL is not immediately available
- Make an accurate record on CPOMS (which may be used in any subsequent judicial proceedings) as soon as possible and within 24 hours of the occurrence. Include everything that has happened, including details of:
 - Dates and times of observations
 - Dates and times of any discussions in which they were involved
 - Any injuries
 - Explanations given by the child / adult
 - Any actual words or phrases used by the child
 - What action was taken
- In the absence of the DSL or their Deputy, be prepared to refer directly to Children's Social Care (and the police if appropriate) if there is the potential for immediate, significant harm see 7.1.

10.5 Early help assessment

If an early help assessment is appropriate, the DSL will generally lead on liaising with other agencies and setting up an inter-agency assessment as appropriate. Staff may be required to support other agencies and professionals in an early help assessment, in some cases acting as the lead practitioner.

We will discuss and agree, with statutory safeguarding partners, levels for the different types of assessment, as part of local arrangements.

The DSL will keep the case under constant review and the school will consider a referral to local authority children's social care if the situation does not seem to be improving. Timelines of interventions will be monitored and reviewed.

10.5.1 Referral

If it is appropriate to refer the case to local authority children's social care or the police, the DSL will make the referral or support you to do so.

If you make a referral directly (see section 10.1), you must tell the DSL as soon as possible and record on CPOMS.

The local authority should make a decision within 1 working day of a referral about what course of action to take and will let the person who made the referral know the outcome. The DSL or person who made the referral must follow up with the local authority if this information is not made available, and ensure outcomes are properly recorded.

If the child's situation does not seem to be improving after the referral, the DSL or person who made the referral must follow local escalation procedures to ensure their concerns have been addressed and that the child's situation improves.

10.6 If you have concerns about extremism

If a child is not suffering or likely to suffer from harm, or in immediate danger, where possible speak to the DSL first to agree a course of action.

If in exceptional circumstances the DSL is not available, this should not delay appropriate action being taken. Speak to a member of the senior leadership team and/or seek advice from local authority children's social care. Make a referral to local authority children's social care directly, if appropriate (see 'Referral' above). Inform the DSL or deputy as soon as practically possible after the referral.



Where there is a concern, the DSL will consider the level of risk and decide which agency to make a referral to. This could include the police or [Channel](#), the government's programme for identifying and supporting individuals at risk of becoming involved with or supporting terrorism, or the local authority children's social care team.

The DfE also has a dedicated telephone helpline, 020 7340 7264, which school staff and governors can call to raise concerns about extremism with respect to a children. You can also email counter.extremism@education.gov.uk. Note that this is not for use in emergency situations.

In an emergency, call 999 or the confidential anti-terrorist hotline on 0800 789 321 if you:

- Think someone is in immediate danger
- Think someone may be planning to travel to join an extremist group
- See or hear something that may be terrorist-related

10.7 If you have a concern about mental health

Mental health problems can, in some cases, be an indicator that a child has suffered or is at risk of suffering abuse, neglect or exploitation.

Staff will be alert to behavioural signs that suggest a child may be experiencing a mental health problem or be at risk of developing one.

If you have a mental health concern about a child that is also a safeguarding concern, take immediate action by following the steps in section 10.1.

If you have a mental health concern that is **not** also a safeguarding concern, speak to the DSL to agree a course of action.

10.8 Concerns about a staff member, supply teacher, volunteer or contractor

If you have concerns about a member of staff (including a supply teacher, volunteer or contractor), or an allegation is made about a member of staff (including a supply teacher, volunteer or contractor) posing a risk of harm to children, speak to the headteacher as soon as possible. If the concerns/allegations are about the headteacher, speak to the chair of governors.

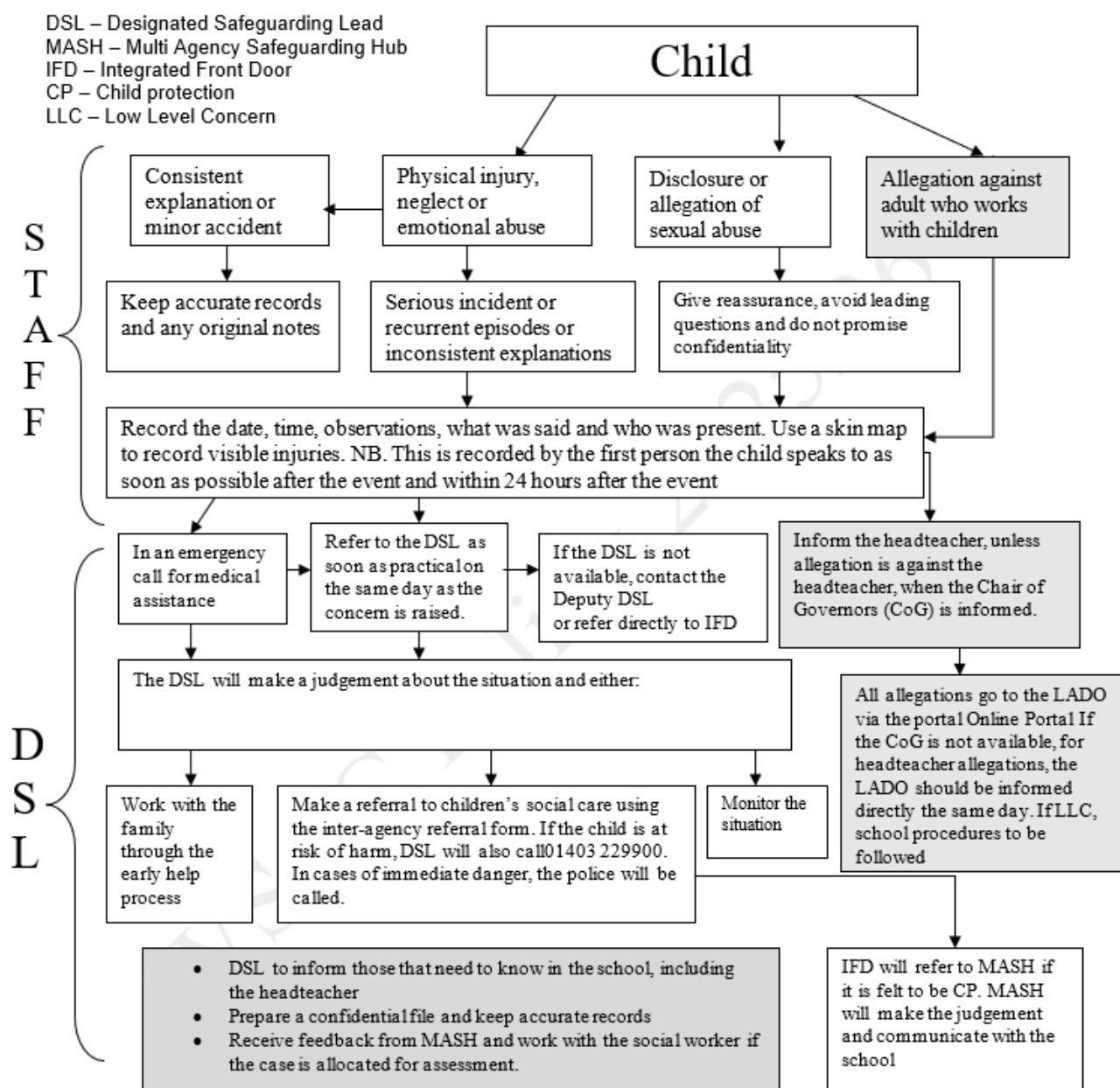
The headteacher/chair of governors will then follow the procedures set out in appendix 3, if appropriate.

Where you believe there is a conflict of interest in reporting a concern or allegation about a member of staff (including a supply teacher, volunteer or contractor) to the headteacher, report it directly to the local authority designated officer (LADO).

If you receive an allegation relating to an incident where an individual or organisation was using the school premises for running an activity for children, follow our school safeguarding policies and procedures, informing the LADO, as you would with any safeguarding allegation.

Figure 1. Flowchart for child protection procedures

Annex 1 - Flowchart for child protection procedures



Following a report of concerns the DSL must:

Decide whether or not there are sufficient grounds for suspecting significant harm, in which case a referral must be made to Children’s Social Care and the police if it is in keeping with the National Police Chiefs Council [“When to call the Police”](#) guidance. The rationale for this decision should be recorded by the DSL

Normally the school should try to discuss any concerns about a child’s welfare with the family and where possible seek their agreement before making a referral to Children’s Social Care. However, in accordance with DfE guidance, this should only be done when it will not place the child at increased risk or could have an impact on a police investigation. Where there are doubts or reservations about involving the child’s family, the DSL should clarify with Children’s Social Care or the police whether the parents should be told about the referral and, if so, when and by whom. This is important in cases



where the police may need to conduct a criminal investigation. The child's views should also be considered when appropriate.

If there are grounds to suspect a child is suffering, or is likely to suffer, significant harm the DSL (or Deputy) must contact Children's Social Care via [Request support or raise a concern about a child - West Sussex County Council](#) making a clear statement of:

- the known facts
- any suspicions or allegations
- whether or not there has been any contact with the child's family.

If there is indication that the child is suffering significant harm, a call will also be made to Integrated Front Door on 01403 229900

If a child is in immediate danger and urgent protective action is required, the police must be called. The DSL must then notify Children's Social Care of the occurrence and what action has been taken.

When a children needs *urgent* medical attention and there is suspicion of parental abuse causing the medical need, the DSL or their Deputy should take the child to the nearest hospital with an accident and emergency facility and inform Children's Social Care. Advice should be sought from Children's Social Care about informing the parents, remembering that parents should normally be informed that a child requires urgent hospital attention.

If there is not a risk of significant harm, the DSL will either actively monitor the situation or consider the Early Help process.

In cases of allegations against staff or low level concerns, the WSSCP procedure or the school Low Level Concerns (LLC) procedure will be followed.

10.9 Allegations of abuse made against other children

We recognise that children are capable of abusing their peers. Abuse will never be tolerated or passed off as "banter", "just having a laugh" or "part of growing up", as this can lead to a culture of unacceptable behaviours and an unsafe environment for children.

All child-on-child abuse is unacceptable and will be taken seriously.

Most cases of children hurting other children will be dealt with under our school's behaviour policy, but this child protection and safeguarding policy will apply to any allegations that raise safeguarding concerns. This might include where the alleged behaviour:

- Is serious, and potentially a criminal offence
- Could put children in the school at risk
- Is violent
- Involves children being forced to use drugs or alcohol
- Involves sexual exploitation, sexual abuse or sexual harassment, such as indecent exposure, sexual assault, upskirting or sexually inappropriate pictures or videos (including the sharing of nudes and semi-nudes)
- See appendix 4 for more information about child-on-child abuse.

10.9.1 Procedures for dealing with allegations of child-on-child abuse

If a children makes an allegation of abuse against another children:

- You must record the allegation and tell the DSL, but do not investigate it
- Children making a report of sexual violence or sexual harassment will be taken seriously, kept safe and be supported.

- Understanding that our initial response to a report from a child is incredibly important and can encourage or undermine the confidence of victims of sexual violence and harassment to report or to come forward in the future.

If the report includes an online element, staff will be mindful of the Searching, Screening and Confiscation: advice for schools (DfE 2022): [Searching, Screening and Confiscation \(publishing.service.gov.uk\)](https://publishing.service.gov.uk/guidance) guidance.

The DSL will consider

- The wishes of the victim.
- The nature of the incident including whether a crime has been committed and the harm caused.
- Ages of the children involved.
- Developmental stages of the children.
- Any power imbalance between the children.
- Any previous incidents.
- On-going risks.
- Other related issues or wider context.

The DSL will Liaise with appropriate services and manage the report with the following options:

- Manage internally
- Refer to Early Help
- Refer to Children's Social Care
- Report to the police (generally in parallel with a referral to Social Care)

The DSL will put a risk assessment and support plan into place for all children involved (including the victim(s), the child(ren) against whom the allegation has been made and any others affected) with a named person they can talk to if needed. This will include considering school transport as a potentially vulnerable place for a victim or alleged perpetrator(s). The risk assessment will consider:

- The victim, especially their protection and support.
- The alleged perpetrator, their support needs, and any disciplinary action.
- All other children at the school.
- The victim and the alleged perpetrator sharing classes and space at school.
- The DSL will contact the children and adolescent mental health services (CAMHS), if appropriate
- If a child is at risk of harm, is in immediate danger, or has been harmed, a referral will be made to Children's Social Care (01403 229900).
- The DSLs ongoing response

All concerns, discussions and decisions made, and the reasons for those decisions, should be recorded in writing. Records should be reviewed so that potential patterns of concerning, problematic or inappropriate behaviour can be identified and addressed.

The DSL will manage each report on a case-by-case basis and will keep the risk reduction plan under review.

Where there is a criminal investigation into a rape, assault by penetration or sexual assault, the alleged perpetrator should be removed from any classes they share with the victim during that investigation.



The DSL will consider how best to keep the victim and perpetrator apart on school premises and transport where appropriate.

Where a criminal investigation into a rape or assault by penetration leads to a conviction or caution, the school will take suitable action. In all but the most exceptional of circumstances, the rape or assault is likely to constitute a serious breach of discipline and lead to the view, that allowing the perpetrator to remain in the same school or college would seriously harm the education or welfare of the victim (and potentially other children).

Where a criminal investigation into sexual assault leads to a conviction or caution, the school or college will, if it has not already, consider any suitable sanctions in light of their behaviour policy, including consideration of permanent exclusion. Where the perpetrator is going to remain at the school or college, the principle of keeping the victim and perpetrator in separate classes where possible should be maintained and continued. Consideration would be given to the most appropriate way to manage potential contact on school and college premises and transport. The nature of the conviction or caution and wishes of the victim will be especially important in determining how to proceed in such cases.

The victim, alleged perpetrator and other witnesses (children and adults) will receive appropriate support and safeguards on a case-by-case basis.

When ongoing support is required by the victim, the victim should be asked whether they would find it helpful to have a designated trusted adult to talk about their needs. The choice of any such adult should be made by the victims (as far as reasonably possible) and this choice should be supported.

The school will take any disciplinary action against the alleged perpetrator in line with behaviour and discipline in the school.

The school recognises that taking disciplinary action and providing appropriate support are not mutually exclusive actions and will occur at the same time if necessary.

If a report is determined to be unsubstantiated, unfounded, false or malicious, the designated safeguarding lead should consider whether the child and/or the person who has made the allegation is in need of help or may have been abused by someone else and whether this is a cry for help. In such circumstances, a referral to children's social care may be appropriate.

If a report is shown to be deliberately invented or malicious, the school or college, should consider whether any disciplinary action is appropriate against the individual who made it as per their own behaviour policy.

While a clear focus of child-on-child abuse is linked to sexual abuse and harassment, physical assaults and initiation violence and rituals from children to children can also be abusive. These are equally not tolerated and, if it is believed that a crime has been committed, will be reported to the police. The principles from the behaviour policy will be applied in these cases, with recognition that any police investigation will need to take priority.

10.9.2 Creating a supportive environment in school and minimising the risk of child-on-child abuse

We recognise the importance of taking proactive action to minimise the risk of child-on-child abuse, and of creating a supportive environment where victims feel confident in reporting incidents.

To achieve this, we will:

- Challenge any form of derogatory or sexualised language or inappropriate behaviour between peers, including requesting or sending sexual images
- Be vigilant to issues that particularly affect different genders – for example, sexualised or aggressive touching or grabbing towards female children, and initiation or hazing-type violence with respect to boys
- Ensure our curriculum helps to educate children about appropriate behaviour and consent

- Ensure children are able to easily and confidently report abuse using our reporting systems (as described in section 7.10 below)
- Ensure staff reassure victims that they are being taken seriously
- Be alert to reports of sexual violence and/or harassment that may point to environmental or systemic problems that could be addressed by updating policies, processes and the curriculum, or could reflect wider issues in the local area that should be shared with safeguarding partners
- Support children who have witnessed sexual violence, especially rape or assault by penetration. We will do all we can to make sure the victim, alleged perpetrator(s) and any witnesses are not bullied or harassed
- Consider intra-familial harms and any necessary support for siblings following a report of sexual violence and/or harassment

Ensure staff are trained to understand:

- How to recognise the indicators and signs of child-on-child abuse, and know how to identify it and respond to reports
- That even if there are no reports of child-on-child abuse in school, it does not mean it is not happening – staff should maintain an attitude of “it could happen here”
- That if they have any concerns about a child’s welfare, they should act on them immediately rather than wait to be told, and that victims may not always make a direct report. For example:
- Children can show signs or act in ways they hope adults will notice and react to
- A friend may make a report
- A member of staff may overhear a conversation
- A child’s behaviour might indicate that something is wrong
- That certain children may face additional barriers to telling someone because of their vulnerability, disability, gender, ethnicity and/or sexual orientation
- That a children harming a peer could be a sign that the child is being abused themselves, and that this would fall under the scope of this policy
- The important role they have to play in preventing child-on-child abuse and responding where they believe a child may be at risk from it
- That they should speak to the DSL if they have any concerns
- That social media is likely to play a role in the fall-out from any incident or alleged incident, including for potential contact between the victim, alleged perpetrator(s) and friends from either side

The DSL will take the lead role in any disciplining of the alleged perpetrator(s). We will provide support at the same time as taking any disciplinary action.

Disciplinary action can be taken while other investigations are going on, e.g. by the police. The fact that another body is investigating or has investigated an incident doesn’t (in itself) prevent our school from coming to its own conclusion about what happened and imposing a penalty accordingly. We will consider these matters on a case-by-case basis, taking into account whether:

Taking action would prejudice an investigation and/or subsequent prosecution – we will liaise with the police and/or local authority children’s social care to determine this

There are circumstances that make it unreasonable or irrational for us to reach our own view about what happened while an independent investigation is ongoing



10.10 Sharing of nudes and semi-nudes ('sexting')

Your responsibilities when responding to an incident

If you are made aware of an incident involving the consensual or non-consensual sharing of nude or semi-nude images/videos, including pseudo-images, which are computer-generated images that otherwise appear to be a photograph or video (also known as 'sexting' or 'youth produced sexual imagery'), you must report it to the DSL immediately.

You must **not**:

- View, copy, print, share, store or save the imagery yourself, or ask a children to share or download it (if you have already viewed the imagery by accident, you must report this to the DSL)
- Delete the imagery or ask the children to delete it
- Ask the children(s) who are involved in the incident to disclose information regarding the imagery (this is the DSL's responsibility)
- Share information about the incident with other members of staff, the children(s) it involves or their, or other, parents and/or carers
- Say or do anything to blame or shame any children involved

You should explain that you need to report the incident, and reassure the children(s) that they will receive support and help from the DSL.

Initial review meeting

Following a report of an incident, the DSL will hold an initial review meeting with appropriate school staff – this may include the staff member who reported the incident and the safeguarding or leadership team that deals with safeguarding concerns. This meeting will consider the initial evidence and aim to determine:

- Whether there is an immediate risk to children(s)
- If a referral needs to be made to the police and/or children's social care
- If it is necessary to view the image(s) in order to safeguard the child (in most cases, images or videos should not be viewed)
- What further information is required to decide on the best response
- Whether the image(s) has been shared widely and via what services and/or platforms (this may be unknown)
- Whether immediate action should be taken to delete or remove images or videos from devices or online services
- Any relevant facts about the children involved which would influence risk assessment
- If there is a need to contact another school, college, setting or individual
- Whether to contact parents or carers of the children involved (in most cases parents/carers should be involved)

The DSL will make an immediate referral to police and/or children's social care if:

- The incident involves an adult. Where an adult poses as a child to groom or exploit a child or child, the incident may first present as a child-on-child incident. See appendix 4 for more information on assessing adult-involved incidents
- There is reason to believe that a child has been coerced, blackmailed or groomed, or if there are concerns about their capacity to consent (for example, owing to their SEN)

- What the DSL knows about the images or videos suggests the content depicts sexual acts which are unusual for the child's developmental stage, or are violent
- The imagery involves sexual acts and any children in the images or videos is under 13
- The DSL has reason to believe a children is at immediate risk of harm owing to the sharing of nudes and semi-nudes (for example, the child is presenting as suicidal or self-harming)

If none of the above apply then the DSL, in consultation with the headteacher and other members of staff as appropriate, may decide to respond to the incident without involving the police or children's social care. The decision will be made and recorded in line with the procedures set out in this policy.

10.10.1 Further review by the DSL

If at the initial review stage a decision has been made not to refer to police and/or children's social care, the DSL will conduct a further review to establish the facts and assess the risks.

They will hold interviews with the children involved (if appropriate).

If at any point in the process there is a concern that a children has been harmed or is at risk of harm, a referral will be made to children's social care and/or the police immediately.

10.10.2 Informing parents/carers

The DSL will inform parents/carers at an early stage and keep them involved in the process, unless there is a good reason to believe that involving them would put the children at risk of harm.

Referring to the police

If it is necessary to refer an incident to the police, this will be done through either 101 or 999 depending on circumstances.

10.10.3 Recording incidents

All incidents of sharing of nudes and semi-nudes, and the decisions made in responding to them, will be recorded. The record-keeping arrangements set out in section 19 of this policy also apply to recording these incidents.

10.10.4 Curriculum coverage

Children are taught about the issues surrounding the sharing of nudes and semi-nudes as part of our PSHE programmes. Teaching covers the following in relation to the sharing of nudes and semi-nudes:

- What it is
- How it is most likely to be encountered
- The consequences of requesting, forwarding or providing such images, including when it is and is not abusive and when it may be deemed as online sexual harassment
- Issues of legality
- The risk of damage to people's feelings and reputation
- Children also learn the strategies and skills needed to manage:
- Specific requests or pressure to provide (or forward) such images
- The receipt of such images

This policy on the sharing of nudes and semi-nudes is also shared with children so they are aware of the processes the school will follow in the event of an incident.

Teaching follows best practice in delivering safe and effective education, including:

- Putting safeguarding first

- Approaching from the perspective of the child
- Promoting dialogue and understanding
- Empowering and enabling children and children
- Never frightening or scare-mongering
- Challenging victim-blaming attitudes

11 Reporting systems for our children

Where there is a safeguarding concern, we will take the child's wishes and feelings into account when determining what action to take and what services to provide.

We recognise the importance of ensuring children feel safe and comfortable to come forward and report any concerns and/or allegations.

To achieve this, we will:

- Put systems in place for children to confidently report abuse so that these can be done verbally and non-verbally i.e. through surveys and e-mails.
- Ensure our reporting systems are well promoted, easily understood and easily accessible for children and they are reminded about these through assemblies and PSHE.
- Make it clear to children that their concerns will be taken seriously, and that they can safely express their views with support for them via our pastoral teams.

12 Online safety and the use of mobile technology

We recognise the importance of safeguarding children from potentially harmful and inappropriate online material, and we understand that technology is a significant component in many safeguarding and wellbeing issues.

To address this, our school aims to:

- Have robust processes (including filtering and monitoring systems) in place to ensure the online safety of children, staff, volunteers and governors
- Protect and educate the whole school community in its safe and responsible use of technology, including mobile and smart technology (which we refer to as 'mobile phones')
- Set clear guidelines for the use of mobile phones for the whole school community
- Establish clear mechanisms to identify, intervene in and escalate any incidents or concerns, where appropriate

The 4 key categories of risk

Our approach to online safety is based on addressing the following categories of risk:

- **Content** – being exposed to illegal, inappropriate or harmful content, such as pornography, racism, misogyny, self-harm, suicide, antisemitism, radicalisation, extremism, misinformation, disinformation (including fake news) and conspiracy theories
- **Contact** – being subjected to harmful online interaction with other users, such as peer-to-peer pressure, commercial advertising and adults posing as children or young adults with the intention to groom or exploit them for sexual, criminal, financial or other purposes
- **Conduct** – personal online behaviour that increases the likelihood of, or causes, harm, such as making, sending and receiving explicit images (e.g. consensual and non-consensual sharing of



nudes and semi-nudes and/or pornography), sharing other explicit images and online bullying; and

- **Commerce** – risks such as online gambling, inappropriate advertising, phishing and/or financial scams

To meet our aims and address the risks above, we will:

- Educate children about online safety as part of our curriculum. For example:
 - The safe use of social media, the internet and technology
 - Keeping personal information private
 - How to recognise unacceptable behaviour online

How to report any incidents of cyber-bullying, ensuring children are encouraged to do so, including where they're a witness rather than a victim

- Train staff, on safe internet use and online safeguarding issues including cyber-bullying, the risks of online radicalisation, and the expectations, roles and responsibilities around filtering and monitoring. All staff members will receive refresher training as required and at least once each academic year
- Educate parents/carers about online safety via our website, communications sent directly to them and during information evenings.
- Make sure staff are aware of any restrictions placed on them with regards to the use of their mobile phone and cameras, for example that:
- Staff are allowed to bring their personal phones to school for their own use, but will limit such use to non-contact time when children are not present
- Staff will not take pictures or recordings of children on their personal phones or cameras
- Make all children aware that they are expected to sign an agreement regarding the acceptable use of the internet in school, use of the school's ICT systems
- Explain the sanctions we will use if a children is in breach of our policies on the acceptable use of the internet and mobile phones
- Make sure all staff, children and parents/carers are aware that staff have the power to search children' phones, as set out in the [DfE's guidance on searching, screening and confiscation](#)
- Put in place robust filtering and monitoring systems to limit children's exposure to the 4 key categories of risk (described above) from the school's IT systems
- Carry out an annual review of our approach to online safety, supported by an annual risk assessment that considers and reflects the risks faced by our school community
- Provide regular safeguarding and children protection updates including online safety to all staff, at least annually, in order to continue to provide them with the relevant skills and knowledge to safeguard effectively
- Review the child protection and safeguarding policy, including online safety, annually and ensure the procedures and implementation are updated and reviewed regularly

This section summarises our approach to online safety and mobile phone use. For full details about our school's policies in these areas, please refer to our online safety policy and mobile phone policies which can be found on our website

<https://www.worthinghigh.net/page/?title=Policy+Documents&pid=14>

13 Artificial intelligence (AI)

Generative artificial intelligence (AI) tools are now widespread and easy to access. Staff, children and parents/carers may be familiar with generative chatbots such as ChatGPT and Google Gemini.

Worthing High School recognises that AI has many uses, including enhancing teaching and learning, and in helping to protect and safeguard children. However, AI may also have the potential to facilitate abuse (e.g. bullying and grooming) and/or expose children to harmful content. For example, in the form of 'deepfakes', where AI is used to create images, audio or video hoaxes that look real.

Worthing High School will treat any use of AI to access harmful content or bully children in line with this policy and our behaviour policy.

Staff should be aware of the risks of using AI tools while they are still being developed and should carry out risk assessments for any new AI tool being used by the school. Our school's requirements for filtering and monitoring also apply to the use of AI, in line with Keeping Children Safe in Education.

A comprehensive approach to online safety empowers staff to protect and educate children, and colleagues in their use of technology and establishes the following mechanisms to identify, intervene in, and escalate any concerns where appropriate.

The breadth of issues classified within online safety is considerable, but can be categorised into four areas of risk:

- **content:** being exposed to illegal, inappropriate or harmful content, for example: pornography, fake news, racism, misogyny, self-harm, suicide, anti-Semitism, radicalisation and extremism.
- **contact:** being subjected to harmful online interaction with other users; for example: peer to peer pressure, commercial advertising and adults posing as children or young adults with the intention to groom or exploit them for sexual, criminal, financial or other purposes.
- **conduct:** personal online behaviour that increases the likelihood of, or causes, harm; for example, making, sending and receiving explicit images (e.g. consensual and non-consensual sharing of nudes and semi-nudes and/or pornography, sharing other explicit images and online bullying; and
- **commerce** - risks such as online gambling, inappropriate advertising, phishing and or financial scams. If we feel children or staff are at risk, we will report it to the Anti-Phishing Working Group (<https://apwg.org/>).

We ensure that online safety is a running and interrelated theme when devising and implementing policies and procedures.

There should be appropriate filtering and monitoring in place on all school devices and school networks. That staff training should include understanding roles and responsibilities in relation to filtering and monitoring. To support schools with this the DfE have produced the following guidance: [Appropriate Filtering and Monitoring - UK Safer Internet Centre](#)

Education settings are directly responsible for ensuring they have the appropriate level of security protection procedures in place in order to safeguard their systems, staff and learners and review the effectiveness of these procedures periodically to keep up with evolving cyber-crime technologies. Guidance on e-security is available from the [National Education Network](#). In addition, schools and colleges should consider meeting the [Cyber security standards for schools and colleges.GOV.UK](#). Broader guidance on cyber security including considerations for governors and trustees can be found at [Cyber security training for school staff - NCSC.GOV.UK](#)

We will consider how online safety is reflected as required in all relevant policies and embedded across all areas of the curriculum, included in teacher training and within the role and responsibilities of the designated safeguarding lead as well as discussions with parents.

The Online Safety Act 2023 (the Act) is a new set of laws that protects children and adults online. It puts a range of new duties on social media companies and search services, making them more responsible for their users' safety on their platforms. The Act will give providers new duties to implement systems and processes to reduce risks their services are used for illegal activity, and to take down illegal content when it does appear: [Online Safety Act: explainer - GOV.UK](#)

13.1 Generative AI

The Department has published Generative AI: product safety expectations to support schools to use generative artificial intelligence safely, and explains how filtering and monitoring requirements apply to the use of generative AI in education

- [Generative AI: product safety expectations - GOV.UK](#)
- [Using AI in education settings: support materials - GOV.UK](#)

14 Notifying parents or carers

Where appropriate, we will discuss any concerns about a child with the child's parents or carers. The DSL will normally do this in the event of a suspicion or disclosure.

Other staff will only talk to parents or carers about any such concerns following consultation with the DSL.

If we believe that notifying the parents or carers would increase the risk to the child, we will discuss this with the local authority children's social care team before doing so.

In the case of allegations of abuse made against other children, we will normally notify the parents or carers of all the children involved. We will think carefully about what information we provide about the other child involved, and when. We will work with the police and/or local authority children's social care to make sure our approach to information sharing is consistent.

The DSL will, along with any relevant agencies (this will be decided on a case-by-case basis):

- Meet with the victim's parents or carers, with the victim, to discuss what's being put in place to safeguard them, and understand their wishes in terms of what support they may need and how the report will be progressed
- Meet with the alleged perpetrator's parents or carers to discuss support for them, and what's being put in place that will impact them, e.g. moving them out of classes with the victim, and the reason(s) behind any decision(s)

15 Children with special educational needs, disabilities or health issues

We recognise that children with SEND or certain health conditions can face additional safeguarding challenges. Children with disabilities are more likely to be abused than their peers. Additional barriers can exist when recognising abuse, exploitation and neglect in this group, including:

- Assumptions that indicators of possible abuse such as behaviour, mood and injury relate to the child's condition without further exploration
- Children being more prone to peer group isolation or bullying (including prejudice-based bullying) than other children
- The potential for children with SEN, disabilities or certain health conditions being disproportionately impacted by behaviours such as bullying, without outwardly showing any signs
- Communication barriers and difficulties in managing or reporting these challenges

- Cognitive understanding – being unable to understand the difference between fact and fiction in online content and then repeating the content/behaviours in school or being unable to understand the consequences of doing so

We offer extra pastoral support for these children.

Any abuse involving children with SEND will require close liaison with the DSL (or deputy) and the SENCO.

16 Children with a social worker

Children may need a social worker due to safeguarding or welfare needs. We recognise that a child's experiences of adversity and trauma can leave them vulnerable to further harm as well as potentially creating barriers to attendance, learning, behaviour and mental health.

- The DSL and all members of staff will work with and support social workers to help protect vulnerable children.

Where we are aware that a children has a social worker, the DSL will always consider this fact to ensure any decisions are made in the best interests of the children's safety, welfare and educational outcomes. For example, it will inform decisions about:

- Responding to unauthorised absence or missing education where there are known safeguarding risks
- The provision of pastoral and/or academic support

17 Looked-after and previously looked-after children

- We will ensure that staff have the skills, knowledge and understanding to keep looked-after children and previously looked-after children safe. In particular, we will ensure that:
- Appropriate staff have relevant information about children's looked after legal status, contact arrangements with birth parents or those with parental responsibility, and care arrangements
- The DSL has details of children's social workers and relevant virtual school heads
- We have appointed a designated teacher, Krystyna Daley - SEN Teacher who is responsible for promoting the educational achievement of looked-after children and previously looked-after children in line with [statutory guidance](#).
- The designated teacher is appropriately trained and has the relevant qualifications and experience to perform the role.
- As part of their role, the designated teacher will:
 - Work closely with the DSL to ensure that any safeguarding concerns regarding looked-after and previously looked-after children are quickly and effectively responded to
 - Work with virtual school heads to promote the educational achievement of looked-after and previously looked-after children, including discussing how children premium plus funding can be best used to support looked-after children and meet the needs identified in their personal education plans

18 Children who are lesbian, gay, bisexual or gender questioning

We recognise that children who are (or who are perceived to be) lesbian, gay, bisexual or gender questioning (LGBTQ+) can be targeted by other children. See our behaviour policy for more detail on how we prevent bullying.



We also recognise that LGBTQ+ children are more likely to experience poor mental health. Any concerns should be reported to the DSL

When families/carers are making decisions about support for gender questioning children, they should be encouraged to seek clinical help and advice. This should be done as early as possible when supporting pre-pubertal children.

When supporting a gender questioning children, we will take a cautious approach as there are still unknowns around the impact of social transition, and a children may have wider vulnerability, such as complex mental health and psychosocial needs, and in some cases, autism and/or attention deficit hyperactivity disorder (ADHD).

We will also consider the broad range of their individual needs, in partnership with their parents/carers (other than in rare circumstances where involving parents/carers would constitute a significant risk of harm to the children). We will also include any clinical advice that is available and consider how to address wider vulnerabilities such as the risk of bullying.

Risks can be compounded where children lack trusted adults with whom they can be open. We therefore aim to reduce the additional barriers faced and create a culture where children can speak out or share their concerns with members of staff.

19 Complaints and concerns about school safeguarding policies

19.1 Complaints against staff

Complaints against staff that are likely to require a child protection investigation will be handled in accordance with our procedures for dealing with allegations of abuse made against staff (see appendix 3).

19.2 Other complaints

Other complaints are resolved in accordance with [South Downs Education Trust Complaints Policy](#)

19.3 Whistleblowing

Worthing High School's whistle blowing policy can be found here: [Whistle Blowing Policy](#)

At Worthing High School, Adrian Cook is the senior manager and responsible for all staff. If you are concerned that any member of staff within the school is not following safeguarding processes or behaving in a way that is placing children at risk, you should make the headteacher aware.

If your concern is about the headteacher, you should raise this with the Chair of Governors Louise Davey.

If you would prefer to raise your concerns outside the school environment you can contact Children's Social Care by calling 01403 229900 Local Authority Designated Officer via [Online Portal](#)

20 Record-keeping

We will hold records in line with our records retention schedule.

All safeguarding concerns, discussions, decisions made and the rationale for those decisions, must be recorded in writing. This should include instances where referrals were or were not made to another agency such as local authority children's social care or the Prevent programme, etc. If you are in any doubt about whether to record something, discuss it with the DSL.

Records will include:

- A clear and comprehensive summary of the concern



- Details of how the concern was followed up and resolved
- A note of any action taken, decisions reached and the outcome

Concerns and referrals will be kept in a separate child protection file for each child.

Any non-confidential records will be readily accessible and available. Confidential information and records will be held securely and only available to those who have a right or professional need to see them.

Safeguarding records relating to individual children will be retained for a reasonable period of time after they have left the school.

If a child for whom the school has, or has had, safeguarding concerns moves to another school, the DSL will ensure that their child protection file is forwarded as soon as possible, securely, and separately from the main children file.

To allow the new school/college to have support in place when the child arrives, this should be within:

- **5 days** for an in-year transfer, or within
- **The first 5 days** of the start of a new term

In addition, if the concerns are significant or complex, and/or social services are involved, the DSL will speak to the DSL of the receiving school and provide information to enable them to have time to make any necessary preparations to ensure the safety of the child.

- Records are electronic on CPOMS
- Access rights to records are made for appropriately trained staff only

In addition:

- Appendix 2 sets out our policy on record-keeping specifically with respect to recruitment and pre-appointment checks
- Appendix 3 sets out our policy on record-keeping with respect to allegations of abuse made against staff

21 Training

21.1 All staff

All staff members will undertake safeguarding and child protection training at induction, including on whistleblowing procedures and online safety, to ensure they understand the school's safeguarding systems and their responsibilities, and can identify signs of possible abuse, exploitation or neglect.

This training will be regularly updated and will:

- Be integrated, aligned and considered as part of the whole-school safeguarding approach and wider staff training, and curriculum planning
- Be in line with advice from the 3 safeguarding partners
- Include online safety, including an understanding of the expectations, roles and responsibilities for staff around filtering and monitoring
- Have regard to the Teachers' Standards to support the expectation that all teachers:
 - Manage behaviour effectively to ensure a good and safe environment
 - Have a clear understanding of the needs of all children



All staff will have training on the government's anti-radicalisation strategy, Prevent, to enable them to identify children at risk of becoming involved with or supporting terrorism, and to challenge extremist ideas.

Staff will also receive regular safeguarding and child protection updates, including on online safety, as required but at least annually (for example, through emails, e-bulletins and staff meetings).

Contractors who are provided through a private finance initiative (PFI) or similar contract will also receive safeguarding training.

Volunteers will receive appropriate training, if applicable.

22 The DSL and deputies

The DSL and deputies will undertake child protection and safeguarding training at least every 2 years.

In addition, they will update their knowledge and skills at regular intervals and at least annually (for example, through e-bulletins, meeting other DSLs, or taking time to read and digest safeguarding developments).

They, or any other designated Prevent lead, will also undertake more in-depth Prevent awareness training, including on extremist and terrorist ideologies.

22.1 Governors

All governors receive training about safeguarding and child protection (including online safety) at induction, which is regularly updated. This is to make sure that they:

- Have the knowledge and information needed to perform their functions and understand their responsibilities, such as providing strategic challenge
- Can be assured that safeguarding policies and procedures are effective and support the school to deliver a robust whole-school approach to safeguarding

As the chair of governors may be required to act as the 'case manager' in the event that an allegation of abuse is made against the headteacher, they receive training in managing allegations for this purpose.

23 Recruitment – interview panels

At least 1 person conducting any interview for any post at the school will have undertaken safer recruitment training. This will cover, as a minimum, the contents of Keeping Children Safe in Education, and will be in line with local safeguarding procedures.

See appendix 2 of this policy for more information about our safer recruitment procedures.

24 Monitoring arrangements

This policy will be reviewed **annually** by Nick Mariosa – Assistant Headteacher. At every review, it will be approved by the full governing board.

Appendix 1: types of abuse

Abuse, including neglect, and safeguarding issues are rarely standalone events that can be covered by 1 definition or label. In most cases, multiple issues will overlap.

24.1 Physical abuse

Physical abuse may involve hitting, shaking, throwing, poisoning, burning or scalding, drowning, suffocating or otherwise causing physical harm to a child. Physical harm may also be caused when a parent or carer fabricates the symptoms of, or deliberately induces, illness in a child.

Indicators of physical abuse / factors that should increase concern

- Multiple bruising or bruises and scratches (especially on the head and face)
- Clusters of bruises – e.g., fingertip bruising (caused by being grasped)
- Bruises around the neck and behind the ears – the most common abusive injuries are to the head
- Bruises on the back, chest, buttocks, or on the inside of the thighs
- Marks indicating injury by an instrument – e.g., linear bruising (stick), parallel bruising (belt), marks of a buckle
- Bite marks
- Deliberate burning may also be indicated by the pattern of an instrument or object – e.g., electric fire, cooker, cigarette
- Scalds with upward splash marks or *tide marks*
- Untreated injuries
- Recurrent injuries or burns
- Bald patches.

In the social context of the school, it is normal to ask about a noticeable injury. The response to such an enquiry is generally light-hearted and detailed. So, most of all, concern should be increased when:

- the explanation given does not match the injury
- the explanation uses words or phrases that do not match the vocabulary of the child (adult words)
- no explanation is forthcoming
- the child (or the parent/carer) is secretive or evasive
- the injury is accompanied by allegations of abuse or assault

You should be concerned if the child or child:

- is reluctant to have parents/carers contacted
- runs away or shows fear of going home
- is aggressive towards themselves or others
- flinches when approached or touched
- is reluctant to undress to change clothing for sport
- wears long sleeves during hot weather
- is unnaturally compliant in the presence of parents/carers.

- has a fear of medical help or attention
- admits to a punishment that appears excessive.

24.2 Emotional abuse

Emotional abuse is the persistent emotional maltreatment of a child such as to cause severe and adverse effects on the child's emotional development. Some level of emotional abuse is involved in all types of maltreatment of a child, although it may occur alone.

Emotional abuse may involve:

- Conveying to a child that they are worthless or unloved, inadequate, or valued only insofar as they meet the needs of another person
- Not giving the child opportunities to express their views, deliberately silencing them or 'making fun' of what they say or how they communicate
- Age or developmentally inappropriate expectations being imposed on children. These may include interactions that are beyond a child's developmental capability, as well as overprotection and limitation of exploration and learning, or preventing the child participating in normal social interaction
- Seeing or hearing the ill-treatment of another
- Serious bullying (including cyber-bullying), causing children frequently to feel frightened or in danger, or the exploitation or corruption of children

24.3 Indicators of emotional abuse

24.3.1 Developmental issues

- Delays in physical, mental and emotional development
- Poor school performance
- Speech disorders, particularly sudden disorders or changes.

24.3.2 Behaviour

- Acceptance of punishment which appears excessive
- Over-reaction to mistakes
- Continual self-deprecation (I'm stupid, ugly, worthless etc)
- Neurotic behaviour (such as rocking, hair-twisting, thumb-sucking)
- Self-mutilation
- Suicide attempts
- Drug/solvent abuse
- Running away
- Compulsive stealing, scavenging
- Acting out
- Poor trust in significant adults
- Regressive behaviour – e.g., wetting
- Eating disorders

- Destructive tendencies
- Neurotic behaviour
- Arriving early at school, leaving late

24.3.3 Social issues

- Withdrawal from physical contact
- Withdrawal from social interaction
- Over-compliant behaviour
- Insecure, clinging behaviour
- Poor social relationships

24.3.4 Emotional responses

- Extreme fear of new situations
- Inappropriate emotional responses to painful situations (“I deserve this”)
- Fear of parents being contacted
- Self-disgust
- Low self-esteem
- Unusually fearful with adults
- Lack of concentration, restlessness, aimlessness
- Extremes of passivity or aggression

24.4 Sexual abuse

Sexual abuse involves forcing or enticing a child or child to take part in sexual activities, not necessarily involving a high level of violence, whether or not the child is aware of what is happening. The activities may involve:

- Physical contact, including assault by penetration (for example, rape or oral sex) or non-penetrative acts such as masturbation, kissing, rubbing and touching outside of clothing
- Non-contact activities, such as involving children in looking at, or in the production of, sexual images, watching sexual activities, encouraging children to behave in sexually inappropriate ways, or grooming a child in preparation for abuse (including via the internet)

Sexual abuse is not solely perpetrated by adult males. Women can also commit acts of sexual abuse, as can other children.

24.5 Indicators of sexual abuse

24.5.1 Physical observations

- Sexually transmitted diseases
- Unexpected pregnancy, especially in very young girls
- Soreness in genital area, anus or mouth and other medical problems such as chronic itching
- Unexplained recurrent urinary tract infections and discharges or abdominal pain

24.5.2 Behavioral observations

- Sexual knowledge inappropriate for age
- Sexualised behaviour or affection inappropriate for age
- Sexually provocative behaviour/promiscuity
- Hinting at sexual activity
- Inexplicable decline in school performance
- Depression or other sudden apparent changes in personality as becoming insecure or clinging
- Lack of concentration, restlessness, aimlessness
- Socially isolated or withdrawn
- Overly compliant behaviour
- Acting out, aggressive behaviour
- Poor trust or fear concerning significant adults
- Regressive behaviour,
- Onset of wetting, by day or night; nightmares
- Onset of insecure, clinging behaviour
- Arriving early at school, leaving late, running away from home
- Suicide attempts, self-mutilation, self-disgust
- Suddenly drawing sexually explicit pictures
- Eating disorders or sudden loss of appetite or compulsive eating
- Regressing to younger behaviour patterns such as thumb sucking or bringing out discarded cuddly toys
- Become worried about clothing being removed
- Trying to be 'ultra-good' or perfect; overreacting to criticism.

24.5.3 Neglect

Neglect is the persistent failure to meet a child's basic physical and/or psychological needs, likely to result in the serious impairment of the child's health or development. Neglect may occur during pregnancy as a result of maternal substance abuse.

Once a child is born, neglect may involve a parent or carer failing to:

- Provide adequate food, clothing and shelter (including exclusion from home or abandonment)
- Protect a child from physical and emotional harm or danger
- Ensure adequate supervision (including the use of inadequate care-givers)
- Ensure access to appropriate medical care or treatment

It may also include neglect of, or unresponsiveness to, a child's basic emotional needs.

NSPCC research has highlighted the following examples of the neglect of children under 12:

- frequently going hungry
- frequently having to go to school in dirty clothes
- regularly having to look after themselves because of parents being away or having problems such as drug or alcohol misuse



- being abandoned or deserted
- living at home in dangerous physical conditions
- not being taken to the doctor when ill
- not receiving dental care.

24.5.4 Indicators of neglect

The following is a summary of some of the indicators that may suggest a child is being abused or is at risk of harm. It is important to recognise that indicators alone cannot confirm whether a child is being abused. Each child should be seen in the context of their family and wider community and a proper assessment carried out by appropriate persons. What is important to keep in mind is that if you feel unsure or concerned, do something about it. Don't keep it to yourself. The WSSCP neglect toolkit provides a more detailed list of indicators of neglect and is available to all staff

24.5.5 Physical indicators of neglect

- Constant hunger and stealing food
- Poor personal hygiene - unkempt, dirty or smelly
- Underweight
- Dress unsuitable for weather
- Poor state of clothing
- Illness or injury untreated

24.5.6 Behavioral indicators of neglect

- Constant tiredness
- Frequent absence from school or lateness
- Missing medical appointments
- Isolated among peers
- Frequently unsupervised
- Stealing or scavenging, especially food
- Destructive tendencies



Appendix 2: Safer recruitment and DBS checks – policy and procedures

24.6 Safer recruitment policy

24.6.1 Recruitment and selection process

To make sure we recruit suitable people, we will ensure that those involved in the recruitment and employment of staff to work with children have received appropriate safer recruitment training.

We have put the following steps in place during our recruitment and selection process to ensure we are committed to safeguarding and promoting the welfare of children.

24.6.2 Advertising

When advertising roles, we will make clear:

- Our school's commitment to safeguarding and promoting the welfare of children
- That safeguarding checks will be undertaken
- The safeguarding requirements and responsibilities of the role, such as the extent to which the role will involve contact with children
- Whether or not the role is exempt from the Rehabilitation of Offenders Act 1974 and the amendments to the Exceptions Order 1975, 2013 and 2020. If the role is exempt, certain spent convictions and cautions are 'protected', so they do not need to be disclosed, and if they are disclosed, we cannot take them into account

24.7 Application forms

Our application forms will:

- Include a statement saying that it is an offence to apply for the role if an applicant is barred from engaging in regulated activity relevant to children (where the role involves this type of regulated activity)
- Include a copy of, or link to, our child protection and safeguarding policy and our policy on the employment of ex-offenders

24.8 Shortlisting

Our shortlisting process will involve at least 2 people and will:

- Consider any inconsistencies and look for gaps in employment and reasons given for them
- Explore all potential concerns

Once we have shortlisted candidates, we will ask shortlisted candidates to:

- Complete a self-declaration of their criminal record or any information that would make them unsuitable to work with children, so that they have the opportunity to share relevant information and discuss it at interview stage. The information we may ask for includes:
 - If they have a criminal history
 - Whether they are included on the barred list
 - Whether they are prohibited from teaching
 - Information about any criminal offences committed in any country in line with the law as applicable in England and Wales
 - Any relevant overseas information



- If they are known to the policy and children's local authority social care and
- If they have been disqualified from providing childcare
- Sign a declaration confirming the information they have provided is true
- We will also consider carrying out an online search on shortlisted candidates to help identify any incidents or issues that are publicly available online. Shortlisted candidates will be informed that we may carry out these checks as part of our due diligence process.

Seeking references and checking employment history

We will obtain references before interview. Any concerns raised will be explored further with referees and taken up with the candidate at interview.

When seeking references we will:

- Not accept open references
- Liaise directly with referees and verify any information contained within references with the referees
- Ensure any references are from the candidate's current employer and completed by a senior person. Where the referee is school based, we will ask for the reference to be confirmed by the headteacher/principal as accurate in respect to disciplinary investigations
- Obtain verification of the candidate's most recent relevant period of employment if they are not currently employed
- Secure a reference from the relevant employer from the last time the candidate worked with children if they are not currently working with children
- Compare the information on the application form with that in the reference and take up any inconsistencies with the candidate
- Resolve any concerns before any appointment is confirmed

24.9 Interview and selection

When interviewing candidates, we will:

- Probe any gaps in employment, or where the candidate has changed employment or location frequently, and ask candidates to explain this
- Explore any potential areas of concern to determine the candidate's suitability to work with children
- Record all information considered and decisions made

24.10 Pre-appointment vetting checks

We will record all information on the checks carried out in the school's single central record (SCR). Copies of these checks, where appropriate, will be held in individuals' personnel files. We follow requirements and best practice in retaining copies of these checks, as set out below.

24.11 New staff

All offers of appointment will be conditional until satisfactory completion of the necessary pre-employment checks. When appointing new staff, we will:

- Verify their identity

- Obtain (via the applicant) an enhanced DBS certificate, including barred list information for those who will be engaging in regulated activity (see definition below). We will obtain the certificate before, or as soon as practicable after, appointment, including when using the DBS update service. We will not keep a copy of the certificate for longer than 6 months, but when the copy is destroyed we may still keep a record of the fact that vetting took place, the result of the check and recruitment decision taken
- Obtain a separate barred list check if they will start work in regulated activity before the DBS certificate is available
- Verify their mental and physical fitness to carry out their work responsibilities
- Verify their right to work in the UK. We will keep a copy of this verification for the duration of the member of staff's employment and for 2 years afterwards
- Verify their professional qualifications, as appropriate
- Ensure they are not subject to a prohibition order if they are employed to be a teacher
- Carry out further additional checks, as appropriate, on candidates who have lived or worked outside of the UK. These could include, where available:
 - For all staff, including teaching positions: [criminal records checks for overseas applicants](#)
 - For teaching positions: obtaining a letter from the professional regulating authority in the country where the applicant has worked, confirming that they have not imposed any sanctions or restrictions on that person, and/or are aware of any reason why that person may be unsuitable to teach
- Check that candidates taking up a management position³ are not subject to a prohibition from management (section 128) direction made by the secretary of state

Regulated activity means a person who will be:

- Responsible, on a regular basis in a school or college, for teaching, training, instructing, caring for or supervising children; or
- Carrying out paid, or unsupervised unpaid, work regularly in a school or college where that work provides an opportunity for contact with children; or
- Engaging in intimate or personal care or overnight activity, even if this happens only once and regardless of whether they are supervised or not

24.12 Existing staff

In certain circumstances we will carry out all the relevant checks on existing staff as if the individual was a new member of staff. These circumstances are when:

- There are concerns about an existing member of staff's suitability to work with children; or
- An individual moves from a post that is not regulated activity to one that is; or
- There has been a break in service of 12 weeks or more

We will refer to the DBS anyone who has harmed, or poses a risk of harm, to a child or vulnerable adult where:

- We believe the individual has engaged in [relevant conduct](#); or

³ Management positions are most likely to include, but are not limited to, headteachers, principals and deputy/assistant headteachers.

- We believe the individual has received a caution or conviction for a relevant (automatic barring either with or without the right to make representations) offence, under the [Safeguarding Vulnerable Groups Act 2006 \(Prescribed Criteria and Miscellaneous Provisions\) Regulations 2009](#); or
- We believe the 'harm test' is satisfied in respect of the individual (i.e. they may harm a child or vulnerable adult or put them at risk of harm); and
- The individual has been removed from working in regulated activity (paid or unpaid) or would have been removed if they had not left

24.13 Agency and third-party staff

We will obtain written notification from any agency or third-party organisation that it has carried out the necessary safer recruitment checks that we would otherwise perform. We will also check that the person presenting themselves for work is the same person on whom the checks have been made.

24.14 Contractors

We will ensure that any contractor, or any employee of the contractor, who is to work at the school has had the appropriate level of DBS check (this includes contractors who are provided through a PFI or similar contract). This will be:

- An enhanced DBS check with barred list information for contractors engaging in regulated activity
- An enhanced DBS check, not including barred list information, for all other contractors who are not in regulated activity but whose work provides them with an opportunity for regular contact with children

We will obtain the DBS check for self-employed contractors.

We will not keep copies of such checks for longer than 6 months.

Contractors who have not had any checks will not be allowed to work unsupervised or engage in regulated activity under any circumstances.

We will check the identity of all contractors and their staff on arrival at the school.

24.15 Trainee teachers

Where applicants for initial teacher training are salaried by us, we will ensure that all necessary checks are carried out.

Where trainee teachers are fee-funded, we will obtain written confirmation from the training provider that necessary checks have been carried out and that the trainee has been judged by the provider to be suitable to work with children.

24.16 Volunteers

We will:

- Never leave an unchecked volunteer unsupervised or allow them to work in regulated activity
- Obtain an enhanced DBS check with barred list information for all volunteers who are new to working in regulated activity
- Carry out a risk assessment when deciding whether to seek an enhanced DBS check without barred list information for any volunteers not engaging in regulated activity. We will retain a record of this risk assessment



24.17 Governors

All governors will have an enhanced DBS check without barred list information.

They will have an enhanced DBS check with barred list information if working in regulated activity.

The chair of the board will have their DBS check countersigned by the secretary of state.

All proprietors, trustees, local governors and members will also have the following checks:

- A section 128 check (to check prohibition on participation in management under [section 128 of the Education and Skills Act 2008](#)).
- Identity
- Right to work in the UK
- Other checks deemed necessary if they have lived or worked outside the UK

24.18 Staff working in alternative provision settings

Where we place a children with an alternative provision provider, we obtain written confirmation from the provider that they have carried out the appropriate safeguarding checks on individuals working there that we would otherwise perform.

24.19 Adults who supervise children on work experience

When organising work experience, we will ensure that policies and procedures are in place to protect children from harm.

We will also consider whether it is necessary for barred list checks to be carried out on the individuals who supervise a children under 16 on work experience. This will depend on the specific circumstances of the work experience, including the nature of the supervision, the frequency of the activity being supervised, and whether the work is regulated activity.

24.20 Children staying with host families

Where the school makes arrangements for children to be provided with care and accommodation by a host family to which they are not related (for example, during a foreign exchange visit), we will request enhanced DBS checks with barred list information on those people.

Where the school is organising such hosting arrangements overseas and host families cannot be checked in the same way, we will work with our partner schools abroad to ensure that similar assurances are undertaken prior to the visit.



Appendix 3: allegations of abuse made against staff

24.21 Allegations against staff (including low-level concerns) policy

24.21.1 Section 1: allegations that may meet the harm threshold

This section applies to all cases in which it is alleged that a current member of staff, including a supply teacher, volunteer or contractor, has:

- Behaved in a way that has harmed a child, or may have harmed a child, and/or
- Possibly committed a criminal offence against or related to a child, and/or
- Behaved towards a child or children in a way that indicates they may pose a risk of harm to children, and/or
- Behaved or may have behaved in a way that indicates they may not be suitable to work with children – this includes behaviour taking place both inside and outside of school

If we're in any doubt as to whether a concern meets the harm threshold, we will consult our local authority designated officer (LADO).

We will deal with any allegation of abuse quickly, in a fair and consistent way that provides effective child protection while also supporting the individual who is the subject of the allegation.

A 'case manager' will lead any investigation. This will be the headteacher, or the chair of where the headteacher is the subject of the allegation. The case manager will be identified at the earliest opportunity.

Our procedures for dealing with allegations will be applied with common sense and judgement.

If we receive an allegation of an incident happening while an individual or organisation was using the school premises to run activities for children, we will follow our safeguarding policies and procedures and inform our LADO.

24.21.2 Suspension of the accused until the case is resolved

Suspension of the accused will not be the default position and will only be considered in cases where there is reason to suspect that a child or other children is/are at risk of harm, or the case is so serious that there might be grounds for dismissal. In such cases, we will only suspend an individual if we have considered all other options available and there is no reasonable alternative.

Based on an assessment of risk, we will consider alternatives such as:

- Redeployment within the school so that the individual does not have direct contact with the child or children concerned
- Providing an assistant to be present when the individual has contact with children
- Redeploying the individual to alternative work in the school so that they do not have unsupervised access to children
- Moving the child or children to classes where they will not come into contact with the individual, making it clear that this is not a punishment and parents/carers have been consulted
- Temporarily redeploying the individual to another role in a different location, for example to an alternative school or other work for the academy trust

If in doubt, the case manager will seek views from the school's personnel adviser and the designated officer at the local authority, as well as the police and local authority children's social care where they have been involved.



24.21.3 Definitions for outcomes of allegation investigations

- **Substantiated:** there is sufficient evidence to prove the allegation
- **Malicious:** there is sufficient evidence to disprove the allegation and there has been a deliberate act to deceive, or to cause harm to the subject of the allegation
- **False:** there is sufficient evidence to disprove the allegation
- **Unsubstantiated:** there is insufficient evidence to either prove or disprove the allegation (this does not imply guilt or innocence)
- **Unfounded:** to reflect cases where there is no evidence or proper basis that supports the allegation being made

24.21.4 Procedure for dealing with allegations

In the event of an allegation that meets the criteria above, the case manager will take the following steps:

- Conduct basic enquiries in line with local procedures to establish the facts to help determine whether there is any foundation to the allegation before carrying on with the steps below
- Discuss the allegation with the designated officer at the local authority. This is to consider the nature, content and context of the allegation and agree a course of action, including whether further enquiries are necessary to enable a decision on how to proceed, and whether it is necessary to involve the police and/or local authority children's social care services. (The case manager may, on occasion, consider it necessary to involve the police before consulting the designated officer – for example, if the accused individual is deemed to be an immediate risk to children or there is evidence of a possible criminal offence. In such cases, the case manager will notify the designated officer as soon as practicably possible after contacting the police)
- Inform the accused individual of the concerns or allegations and likely course of action as soon as possible after speaking to the designated officer (and the police or local authority children's social care services, where necessary). Where the police and/or local authority children's social care services are involved, the case manager will only share such information with the individual as has been agreed with those agencies
- Where appropriate (in the circumstances described above), carefully consider whether suspension of the individual from contact with children at the school is justified or whether alternative arrangements such as those outlined above can be put in place. Advice will be sought from the designated officer, police and/or local authority children's social care services, as appropriate
- Where the case manager is concerned about the welfare of other children in the community or the individual's family, they will discuss these concerns with the DSL and make a risk assessment of the situation. If necessary, the DSL may make a referral to local authority children's social care
- **If immediate suspension is considered necessary**, agree and record the rationale for this with the designated officer. The record will include information about the alternatives to suspension that have been considered, and why they were rejected. Written confirmation of the suspension will be provided to the individual facing the allegation or concern within 1 working day, and the individual will be given a named contact at the school and their contact details
- **If it is decided that no further action is to be taken** in regard to the subject of the allegation or concern, record this decision and the justification for it and agree with the designated officer what information should be put in writing to the individual and by whom, as well as

what action should follow both in respect of the individual and those who made the initial allegation

- **If it is decided that further action is needed**, take steps as agreed with the designated officer to initiate the appropriate action in school and/or liaise with the police and/or local authority children's social care services as appropriate
- Provide effective support for the individual facing the allegation or concern, including appointing a named representative to keep them informed of the progress of the case and considering what other support is appropriate. Support may be sought through a trade union representative, a colleague or through welfare counselling via the School Advisory Services
- Inform the parents or carers of the child/children involved about the allegation as soon as possible if they do not already know (following agreement with local authority children's social care services and/or the police, if applicable). The case manager will also inform the parents or carers of the requirement to maintain confidentiality about any allegations made against teachers (where this applies) while investigations are ongoing. Any parent or carer who wishes to have the confidentiality restrictions removed in respect of a teacher will be advised to seek legal advice
- Keep the parents or carers of the child/children involved informed of the progress of the case (only in relation to their child – no information will be shared regarding the staff member)
- Make a referral to the DBS where it is thought that the individual facing the allegation or concern has engaged in conduct that harmed or is likely to harm a child, or if the individual otherwise poses a risk of harm to a child

If the school is made aware that the secretary of state has made an interim prohibition order in respect of an individual, we will immediately suspend that individual from teaching, pending the findings of the investigation by the Teaching Regulation Agency.

Where the police are involved, wherever possible the school will ask the police at the start of the investigation to obtain consent from the individuals involved to share their statements and evidence for use in the school's disciplinary process, should this be required at a later point.

Additional considerations for supply teachers and all contracted staff

- If there are concerns or an allegation is made against someone not directly employed by the school, such as a supply teacher or contracted staff member provided by an agency, we will take the actions below in addition to our standard procedures.
- We will not decide to stop using an individual due to safeguarding concerns without finding out the facts and liaising with our LADO to determine a suitable outcome
- The governing board will discuss with the agency whether it is appropriate to suspend the individual, or redeploy them to another part of the school, while the school carries out the investigation
- We will involve the agency fully, but the school will take the lead in collecting the necessary information and providing it to the LADO as required
- We will address issues such as information sharing, to ensure any previous concerns or allegations known to the agency are taken into account (we will do this, for example, as part of the allegations management meeting or by liaising directly with the agency where necessary)

When using an agency, we will inform them of our process for managing allegations, and keep them updated about our policies as necessary, and will invite the agency's HR manager or equivalent to meetings as appropriate.

24.21.5 Timescales

We will deal with all allegations as quickly and effectively as possible and will endeavour to comply with the following timescales, where reasonably practicable:

- Any cases where it is clear immediately that the allegation is unsubstantiated or malicious should be resolved within 1 week
- If the nature of an allegation does not require formal disciplinary action, appropriate action should be taken within 3 working days
- If a disciplinary hearing is required and can be held without further investigation, this should be held within 15 working days

However, these are objectives only and where they are not met, we will endeavour to take the required action as soon as possible thereafter.

24.21.6 Specific actions

Action following a criminal investigation or prosecution

The case manager will discuss with the local authority's designated officer whether any further action, including disciplinary action, is appropriate and, if so, how to proceed, taking into account information provided by the police and/or local authority children's social care services.

Conclusion of a case where the allegation is substantiated

If the allegation is substantiated and the individual is dismissed or the school ceases to use their services, or the individual resigns or otherwise ceases to provide their services, the school will make a referral to the DBS for consideration of whether inclusion on the barred lists is required.

If the individual concerned is a member of teaching staff, the school will consider whether to refer the matter to the Teaching Regulation Agency to consider prohibiting the individual from teaching.

Individuals returning to work after suspension

If it is decided on the conclusion of a case that an individual who has been suspended can return to work, the case manager will consider how best to facilitate this.

The case manager will also consider how best to manage the individual's contact with the child or children who made the allegation, if they are still attending the school.

Unsubstantiated, unfounded, false or malicious reports

If a report is:

- Determined to be unsubstantiated, unfounded, false or malicious, the DSL will consider the appropriate next steps. If they consider that the child and/or person who made the allegation is in need of help, or the allegation may have been a cry for help, a referral to local authority children's social care may be appropriate
- Shown to be deliberately invented, or malicious, the school will consider whether any disciplinary action is appropriate against the individual(s) who made it

24.21.7 Unsubstantiated, unfounded, false or malicious allegations

If an allegation is:

- Determined to be unsubstantiated, unfounded, false or malicious, the LADO and case manager will consider the appropriate next steps. If they consider that the child and/or person who made the allegation is in need of help, or the allegation may have been a cry for help, a referral to local authority children's social care may be appropriate
- Shown to be deliberately invented, or malicious, the school will consider whether any disciplinary action is appropriate against the individual(s) who made it



24.21.8 Confidentiality and information sharing

The school will make every effort to maintain confidentiality and guard against unwanted publicity while an allegation is being investigated or considered.

The case manager will take advice from the LADO, police and local authority children's social care services, as appropriate, to agree:

- Who needs to know about the allegation and what information can be shared
- How to manage speculation, leaks and gossip, including how to make parents or carers of a child/children involved aware of their obligations with respect to confidentiality
- What, if any, information can be reasonably given to the wider community to reduce speculation
- How to manage press interest if, and when, it arises

24.21.9 Record-keeping

The case manager will maintain clear records about any case where the allegation or concern meets the criteria above and store them on the individual's confidential personnel file for the duration of the case.

The records of any allegation that, following an investigation, is found to be malicious or false will be deleted from the individual's personnel file (unless the individual consents for the records to be retained on the file).

For all other allegations (which are not found to be malicious or false), the following information will be kept on the file of the individual concerned:

- A clear and comprehensive summary of the allegation
- Details of how the allegation was followed up and resolved
- Notes of any action taken, decisions reached and the outcome
- A declaration on whether the information will be referred to in any future reference

In these cases, the school will provide a copy to the individual, in agreement with local authority children's social care or the police as appropriate.

We will retain all records at least until the accused individual has reached normal pension age, or for 10 years from the date of the allegation if that is longer.

24.21.10 References

When providing employer references, we will:

- Not refer to any allegation that has been found to be false, unfounded, unsubstantiated or malicious, or any repeated allegations that have all been found to be false, unfounded, unsubstantiated or malicious
- Include substantiated allegations, provided that the information is factual and does not include opinions

24.21.11 Learning lessons

After any cases where the allegations are substantiated, the case manager will review the circumstances of the case with the LADO to determine whether there are any improvements that we can make to the school's procedures or practice to help prevent similar events in the future.

This will include consideration of (as applicable):

- Issues arising from the decision to suspend the member of staff



- The duration of the suspension
- Whether or not the suspension was justified
- The use of suspension when the individual is subsequently reinstated. We will consider how future investigations of a similar nature could be carried out without suspending the individual

For all other cases, the case manager will consider the facts and determine whether any improvements can be made.

24.21.12 Non-recent allegations

Abuse can be reported, no matter how long ago it happened.

We will report any non-recent allegations made by a child to the LADO in line with our local authority's procedures for dealing with non-recent allegations.

Where an adult makes an allegation to the school that they were abused as a child, we will advise the individual to report the allegation to the police.

24.21.13 Section 2: concerns that do not meet the harm threshold

This section applies to all concerns (including allegations) about members of staff, including supply teachers, volunteers and contractors, which do not meet the harm threshold set out in section 1 above.

Concerns may arise through, for example:

- Suspicion
- Complaint
- Safeguarding concern or allegation from another member of staff
- Disclosure made by a child, parent or other adult within or outside the school
- Pre-employment vetting checks

We recognise the importance of responding to and dealing with any concerns in a timely manner to safeguard the welfare of children.

24.21.14 Definition of low-level concerns

The term 'low-level' concern is any concern – no matter how small – that an adult working in or on behalf of the school may have acted in a way that:

- Is inconsistent with the staff code of conduct, including inappropriate conduct outside of work, **and**
- Does not meet the allegations threshold or is otherwise not considered serious enough to consider a referral to the designated officer at the local authority

Examples of such behaviour could include, but are not limited to:

- Being overly friendly with children
- Having favourites
- Taking photographs of children on their mobile phone
- Engaging with a child on a one-to-one basis in a secluded area or behind a closed door
- Humiliating children

24.21.15 Sharing low-level concerns

We recognise the importance of creating a culture of openness, trust and transparency to encourage all staff to confidentially share low-level concerns so that they can be addressed appropriately.

We will create this culture by:

- Ensuring staff are clear about what appropriate behaviour is, and are confident in distinguishing expected and appropriate behaviour from concerning, problematic or inappropriate behaviour, in themselves and others
- Empowering staff to share any low-level concerns as per section 7.7 of this policy
- Empowering staff to self-refer
- Addressing unprofessional behaviour and supporting the individual to correct it at an early stage
- Providing a responsive, sensitive and proportionate handling of such concerns when they are raised
- Helping to identify any weakness in the school's safeguarding system

24.21.16 Responding to low-level concerns

If the concern is raised via a third party, the headteacher will collect evidence where necessary by speaking:

- Directly to the person who raised the concern, unless it has been raised anonymously
- To the individual involved and any witnesses

The headteacher will use the information collected to categorise the type of behaviour and determine any further action, in line with the school's staff code of conduct. The headteacher will be the ultimate decision-maker in respect of all low-level concerns, though they may wish to collaborate with the DSL.

24.21.17 Record keeping

All low-level concerns will be recorded in writing. In addition to details of the concern raised, records will include the context in which the concern arose, any action taken and the rationale for decisions and action taken.

Records will be:

- Kept confidential, held securely and comply with the Data Protection Act 2018 and the UK GDPR
- Reviewed so that potential patterns of concerning, problematic or inappropriate behaviour can be identified. Where a pattern of such behaviour is identified, we will decide on a course of action, either through our disciplinary procedures or, where a pattern of behaviour moves from a concern to meeting the harm threshold as described in section 1 of this appendix, we will refer it to the designated officer at the local authority
- Retained at least until the individual leaves employment at the school

Where a low-level concern relates to a supply teacher or contractor, we will notify the individual's employer, so any potential patterns of inappropriate behaviour can be identified.

24.21.18 References

We will not include low-level concerns in references unless:

- The concern (or group of concerns) has met the threshold for referral to the designated officer at the local authority and is found to be substantiated; and/or

- The concern (or group of concerns) relates to issues that would ordinarily be included in a reference, such as misconduct or poor performance

25 Appendix 4: specific safeguarding issues

25.1.1 Assessing adult-involved nude and semi-nude sharing incidents

All adult-involved nude and semi-nude image sharing incidents are child sexual abuse offences and must immediately be referred to police/social care. However, as adult-involved incidents can present as child-on-child nude/semi-nude sharing, it may be difficult to initially assess adult involvement.

There are two types of common adult-involved incidents: sexually motivated incidents and financially motivated incidents.

25.1.2 Sexually motivated incidents

In this type of incident, an adult offender obtains nude and semi-nudes directly from a child or child using online platforms.

To make initial contact, the offender may present as themselves or use a false identity on the platform, sometimes posing as a child or child to encourage a response and build trust. The offender often grooms the child or child on social media, in chatrooms or on gaming platforms, and may then move the conversation to a private messaging app or an end-to-end encrypted (E2EE) environment where a request for a nude or semi-nude is made. To encourage the child or child to create and share nude or semi-nude, the offender may share pornography or child sexual abuse material (images of other children), including AI-generated material.

Once a child or child shares a nude or semi-nude, an offender may blackmail the child or child into sending more images by threatening to release them online and/or send them to friends and family.

Potential signs of adult-involved grooming and coercion can include the child or child being:

- Contacted by an online account that they do not know but appears to be another child or child
- Quickly engaged in sexually explicit communications, which may include the offender sharing unsolicited images
- Moved from a public to a private/E2EE platform
- Coerced/pressured into doing sexual things, including creating nudes and semi-nudes
- Offered something of value such as money or gaming credits
- Threatened or blackmailed into carrying out further sexual activity. This may follow the child or child initially sharing the image or the offender sharing a digitally manipulated image of the child or child to extort 'real' images

25.1.3 Financially motivated incidents

Financially motivated sexual extortion (often known as 'sextortion') is an adult-involved incident in which an adult offender (or offenders) threatens to release nudes or semi-nudes of a child or child unless they pay money or do something else to benefit them.

Unlike other adult-involved incidents, financially motivated sexual extortion is usually carried out by offenders working in sophisticated organised crime groups (OCGs) overseas and are only motivated by profit. Adults are usually targeted by these groups too.

Offenders will often use a false identity, sometimes posing as a child or child, or hack another child's account to make initial contact. To financially blackmail the child or child, they may:

Groom or coerce the child or child into sending nudes or semi-nudes and financially blackmail them

- Use images that have been stolen from the child or child taken through hacking their account



- Use digitally manipulated images, including AI-generated images, of the child or child

The offender may demand payment or the use of the victim's bank account for the purposes of money laundering.

Potential signs of adult-involved financially motivated sexual extortion can include the child or child being:

- Contacted by an online account that they do not know but appears to be another child or child. They may be contacted by a hacked account of a child or child
- Quickly engaged in sexually explicit communications which may include the offender sharing an image first
- Moved from a public to a private/E2EE platform
- Pressured into taking nudes or semi-nudes
- Told they have been hacked and they have access to their images, personal information and contacts
- Blackmailed into sending money or sharing bank account details after sharing an image or the offender sharing hacked or digitally manipulated images of the child or child

25.1.4 Children who are absent from education

A child being absent from education, particularly repeatedly, can be a warning sign of a range of safeguarding issues. This might include abuse or neglect, such as sexual abuse or exploitation or child criminal exploitation, or issues such as mental health problems, substance abuse, radicalisation, FGM or forced marriage.

There are many circumstances where a child may be absent or become missing from education, but some children are particularly at risk. These include children who:

- Are at risk of harm or neglect
- Are at risk of forced marriage or FGM
- Come from Gypsy, Roma, or Traveller families
- Come from the families of service personnel
- Go missing or run away from home or care
- Are supervised by the youth justice system
- Cease to attend a school
- Come from new migrant families

We will follow our procedures for unauthorised absence and for dealing with children who are absent from education, particularly on repeat occasions, to help identify the risk of abuse, exploitation and neglect, including sexual exploitation, and to help prevent the risks of going missing in future. This includes informing the local authority if a child leaves the school without a new school being named, and adhering to requirements with respect to sharing information with the local authority, when applicable, when removing a child's name from the admission register at non-standard transition points.

Staff will be trained in signs to look out for and the individual triggers to be aware of when considering the risks of potential safeguarding concerns which may be related to being absent, such as travelling to conflict zones, FGM and forced marriage.

If a staff member suspects that a child is suffering from harm or neglect, we will follow local child protection procedures, including with respect to making reasonable enquiries. We will make an



immediate referral to the local authority children's social care team, and the police, if the child is suffering or likely to suffer from harm, or in immediate danger.

25.1.5 Child criminal exploitation

Child criminal exploitation (CCE) is a form of abuse where an individual or group takes advantage of an imbalance of power to coerce, control, manipulate or deceive a child into criminal activity. It may involve an exchange for something the victim needs or wants, and/or for the financial or other advantage of the perpetrator or facilitator, and/or through violence or the threat of violence.

The abuse can be perpetrated by males or females, and children or adults. It can be a one-off occurrence or a series of incidents over time, and range from opportunistic to complex organised abuse.

The victim can be exploited even when the activity appears to be consensual. It does not always involve physical contact and can happen online. For example, children may be forced to work in cannabis factories, coerced into moving drugs or money across the country (county lines), forced to shoplift or pickpocket, or to threaten other children.

- Indicators of CCE can include a child:
- Appearing with unexplained gifts or new possessions
- Associating with other children involved in exploitation
- Suffering from changes in emotional wellbeing
- Misusing drugs and alcohol
- Going missing for periods of time or regularly coming home late
- Regularly missing school or education
- Not taking part in education

If a member of staff suspects CCE, they will discuss this with the DSL. The DSL will trigger the local safeguarding procedures, including a referral to the local authority's children's social care team and the police, if appropriate.

25.1.6 Child sexual exploitation

Child sexual exploitation (CSE) is a form of child sexual abuse where an individual or group takes advantage of an imbalance of power to coerce, manipulate or deceive a child into sexual activity. It may involve an exchange for something the victim needs or wants and/or for the financial advantage or increased status of the perpetrator or facilitator. It may, or may not, be accompanied by violence or threats of violence.

The abuse can be perpetrated by males or females, and children or adults. It can be a one-off occurrence or a series of incidents over time, and range from opportunistic to complex organised abuse.

The victim can be exploited even when the activity appears to be consensual. Children or children who are being sexually exploited may not understand that they are being abused. They often trust their abuser and may be tricked into believing they are in a loving, consensual relationship.

CSE can include both physical contact (penetrative and non-penetrative acts) and non-contact sexual activity. It can also happen online. For example, children may be persuaded or forced to share sexually explicit images of themselves, have sexual conversations by text, or take part in sexual activities using a webcam. CSE may also occur without the victim's immediate knowledge, for example through others copying videos or images.

In addition to the CCE indicators above, indicators of CSE can include a child:

- Having an older boyfriend or girlfriend
- Suffering from sexually transmitted infections or becoming pregnant

If a member of staff suspects CSE, they will discuss this with the DSL. The DSL will trigger the local safeguarding procedures, including a referral to the local authority's children's social care team and the police, if appropriate.

25.1.7 Child-on-child abuse

Child-on-child abuse is when children abuse other children. This type of abuse can take place inside and outside of school. It can also take place both face-to-face and online, and can occur simultaneously between the two.

Our school has a zero-tolerance approach to sexual violence and sexual harassment. We recognise that even if there are no reports, that doesn't mean that this kind of abuse isn't happening. We are clear that sexual violence and sexual harassment is not acceptable, will never be tolerated and is not an inevitable part of growing up.

Child-on-child abuse is most likely to include, but may not be limited to:

- Bullying (including cyber-bullying, prejudice-based and discriminatory bullying)
- Abuse in intimate personal relationships between children (this is sometimes known as 'teenage relationship abuse')
- Physical abuse such as hitting, kicking, shaking, biting, hair pulling, or otherwise causing physical harm (this may include an online element which facilitates, threatens and/or encourages physical abuse)
- Sexual violence, such as rape, assault by penetration and sexual assault (this may include an online element which facilitates, threatens and/or encourages sexual violence)
- Sexual harassment, such as sexual comments, remarks, jokes and online sexual harassment, which may be standalone or part of a broader pattern of abuse
- Causing someone to engage in sexual activity without consent, such as forcing someone to strip, touch themselves sexually, or to engage in sexual activity with a third party
- Consensual and non-consensual sharing of nude and semi-nude images and/or videos (also known as sexting or youth produced sexual imagery)
- Upskirting, which typically involves taking a picture under a person's clothing without their permission, with the intention of viewing their genitals or buttocks to obtain sexual gratification, or cause the victim humiliation, distress or alarm
- Initiation/hazing type violence and rituals (this could include activities involving harassment, abuse or humiliation used as a way of initiating a person into a group and may also include an online element)

Where children abuse their peers online, this can take the form of, for example, abusive, harassing, and misogynistic messages; the non-consensual sharing of indecent images, especially around chat groups; and the sharing of abusive images and pornography, to those who don't want to receive such content.

If staff have any concerns about child-on-child abuse, or a child makes a report to them, they will follow the procedures set out in section 7 of this policy, as appropriate. In particular, section 7.8 and 7.9 set out more detail about our school's approach to this type of abuse.

When considering instances of harmful sexual behaviour between children, we will consider their ages and stages of development. We recognise that children displaying harmful sexual behaviour have often experienced their own abuse and trauma, and will offer them appropriate support.



We will minimise the risk of child-on-child abuse by:

- Taking a whole school approach to safeguarding and child protection
- Providing training to staff
- Providing a clear set of values and standards, underpinned by the school's behaviour policy and pastoral support system, and by a planned programme of evidence-based content delivered through the curriculum
- Engaging with specialist support and interventions.

25.1.8 Domestic abuse

Children can witness and be adversely affected by domestic abuse and/or violence at home where it occurs between family members. In some cases, a child may blame themselves for the abuse or may have had to leave the family home as a result.

Types of domestic abuse include intimate partner violence, abuse by family members, teenage relationship abuse (abuse in intimate personal relationships between children) and child/adolescent to parent violence and abuse. It can be physical, sexual, financial, psychological or emotional. It can also include ill treatment that isn't physical, as well as witnessing the ill treatment of others. This can be particularly relevant, for example, in relation to the impact on children of all forms of domestic abuse, including where they see, hear or experience its effects.

Anyone can be a victim of domestic abuse, regardless of gender, age, ethnicity, socioeconomic status, sexuality or background, and domestic abuse can take place inside or outside of the home. Children who witness domestic abuse are also victims.

Older children may also experience and/or be the perpetrators of domestic abuse and/or violence in their own personal relationships. This can include sexual harassment.

Exposure to domestic abuse and/or violence can have a serious, long-lasting emotional and psychological impact on children and affect their health, wellbeing, development and ability to learn.

If police are called to an incident of domestic abuse and any children in the household have experienced the incident, the police will inform the key adult in school (usually the designated safeguarding lead) before the child or children arrive at school the following day.

The DSL will provide support according to the child's needs and update records about their circumstances.

25.1.9 Homelessness

Being homeless or being at risk of becoming homeless presents a real risk to a child's welfare.

The DSL and deputies will be aware of contact details and referral routes in to the local housing authority so they can raise/progress concerns at the earliest opportunity (where appropriate and in accordance with local procedures).

Where a child has been harmed or is at risk of harm, the DSL will also make a referral to local authority children's social care.

25.1.10 So-called 'honour-based' abuse (including FGM and forced marriage)

So-called 'honour-based' abuse (HBA) encompasses incidents or crimes committed to protect or defend the honour of the family and/or community, including FGM, forced marriage, and practices such as breast ironing.

Abuse committed in this context often involves a wider network of family or community pressure and can include multiple perpetrators.

All forms of HBA are abuse and will be handled and escalated as such. All staff will be alert to the possibility of a child being at risk of HBA or already having suffered it. If staff have a concern, they will speak to the DSL, who will activate local safeguarding procedures.

25.1.11 FGM

The DSL will make sure that staff have access to appropriate training to equip them to be alert to children affected by FGM or at risk of FGM.

Section 7.3 of this policy sets out the procedures to be followed if a staff member discovers that an act of FGM appears to have been carried out or suspects that a children is at risk of FGM.

Indicators that FGM has already occurred include:

- A children confiding in a professional that FGM has taken place
- A mother/family member disclosing that FGM has been carried out
- A family/children already being known to social services in relation to other safeguarding issues
- A girl:
 - Having difficulty walking, sitting or standing, or looking uncomfortable
 - Finding it hard to sit still for long periods of time (where this was not a problem previously)
 - Spending longer than normal in the bathroom or toilet due to difficulties urinating
 - Having frequent urinary, menstrual or stomach problems
 - Avoiding physical exercise or missing PE
 - Being repeatedly absent from school, or absent for a prolonged period
 - Demonstrating increased emotional and psychological needs – for example, withdrawal or depression, or significant change in behaviour
 - Being reluctant to undergo any medical examinations
 - Asking for help, but not being explicit about the problem
 - Talking about pain or discomfort between her legs

Potential signs that a children may be at risk of FGM include:

- The girl's family having a history of practising FGM (this is the biggest risk factor to consider)
- FGM being known to be practised in the girl's community or country of origin
- A parent or family member expressing concern that FGM may be carried out
- A family not engaging with professionals (health, education or other) or already being known to social care in relation to other safeguarding issues

A girl:

- Having a mother, older sibling or cousin who has undergone FGM
- Having limited level of integration within UK society
- Confiding to a professional that she is to have a "special procedure" or to attend a special occasion to "become a woman"
- Talking about a long holiday to her country of origin or another country where the practice is prevalent, or parents/carers stating that they or a relative will take the girl out of the country for a prolonged period

- Requesting help from a teacher or another adult because she is aware or suspects that she is at immediate risk of FGM
- Talking about FGM in conversation – for example, a girl may tell other children about it (although it is important to take into account the context of the discussion)
- Being unexpectedly absent from school
- Having sections missing from her 'red book' (child health record) and/or attending a travel clinic or equivalent for vaccinations/anti-malarial medication

The above indicators and risk factors are not intended to be exhaustive.

25.1.12 Forced marriage

Forcing a person into marriage is a crime. A forced marriage is one entered into without the full and free consent of 1 or both parties and where violence, threats, or any other form of coercion is used to cause a person to enter into a marriage. Threats can be physical or emotional and psychological.

It is also illegal to cause a child under the age of 18 to marry, even if violence, threats or coercion are not involved.

Staff will receive training around forced marriage and the presenting symptoms. We are aware of the '1 chance' rule, i.e. we may only have 1 chance to speak to the potential victim and only 1 chance to save them.

If a member of staff suspects that a children is being forced into marriage, they will speak to the children about their concerns in a secure and private place. They will then report this to the DSL.

The DSL will:

- Speak to the children about the concerns in a secure and private place
- Activate the local safeguarding procedures and refer the case to the local authority's designated officer
- Seek advice from the Forced Marriage Unit on 020 7008 0151 or fm@fco.gov.uk
- Refer the children to an education welfare officer, pastoral tutor, learning mentor, or school counsellor, as appropriate

25.1.13 Preventing radicalisation

- **Radicalisation** refers to the process of a person legitimising support for, or use of, terrorist violence
- **Extremism** is the promotion or advancement of an ideology based on violence, hatred or intolerance, that aims to:
 - Negate or destroy the fundamental rights and freedoms of others; or
 - Undermine, overturn or replace the UK's system of liberal parliamentary democracy and democratic rights; or
 - Intentionally create a permissive environment for others to achieve the results outlined in either of the above points
- **Terrorism** is an action that:
 - Endangers or causes serious violence to a person/people;
 - Causes serious damage to property; or
 - Seriously interferes or disrupts an electronic system

The use or threat of terrorism must be designed to influence the government or to intimidate the public and is made for the purpose of advancing a political, religious or ideological cause.

Schools have a duty to prevent children from becoming involved with or supporting terrorism. The DSL, or designated Prevent lead, will undertake in-depth Prevent awareness training, including on extremist and terrorist ideologies. They'll make sure that staff have access to appropriate training to equip them to identify children at risk.

We will assess the risk of children in our school from becoming involved with or supporting terrorism. This assessment will be based on an understanding of the potential risk in our local area, in collaboration with our local safeguarding partners and local police force.

We will ensure that suitable internet filtering is in place, and equip our children to stay safe online at school and at home.

There is no single way of identifying an individual who is likely to be susceptible to radicalisation into terrorism. Radicalisation can occur quickly or over a long period.

Staff will be alert to changes in children' behaviour.

The government website [Educate Against Hate](#) and the [NSPCC](#) say that signs that a children is being radicalised can include:

- Refusal to engage with, or becoming abusive to, peers who are different from themselves
- Becoming susceptible to conspiracy theories and feelings of persecution
- Changes in friendship groups and appearance
- Rejecting activities they used to enjoy
- Converting to a new religion
- Isolating themselves from family and friends
- Talking as if from a scripted speech
- An unwillingness or inability to discuss their views
- A sudden disrespectful attitude towards others
- Increased levels of anger
- Increased secretiveness, especially around internet use
- Expressions of sympathy for extremist ideologies and groups, or justification of their actions
- Accessing extremist material online, including on social media
- Possessing extremist literature
- Being in contact with extremist recruiters and joining, or seeking to join, extremist organisations

Children who are at risk of radicalisation may have low self-esteem, or be victims of bullying or discrimination. It is important to note that these signs can also be part of normal teenage behaviour – staff should have confidence in their instincts and seek advice if something feels wrong.

If staff are concerned about a children, they will follow our procedures set out in section 7.5 of this policy, including discussing their concerns with the DSL.

Staff should **always** take action if they are worried.

26 Sexual violence and sexual harassment between children in schools

Sexual violence and sexual harassment can occur:

- Between 2 children of any age and sex
- Through a group of children sexually assaulting or sexually harassing a single child or group of children
- Online and face to face (both physically and verbally)

Sexual violence and sexual harassment exist on a continuum and may overlap.

Children who are victims of sexual violence and sexual harassment will likely find the experience distressing. This will, in all likelihood, adversely affect their educational attainment and will be exacerbated if the alleged perpetrator(s) attends the same school.

If a victim reports an incident, it is essential that staff make sure they are reassured that they are being taken seriously and that they will be supported and kept safe. A victim should never be given the impression that they are creating a problem by reporting any form of abuse or neglect. Nor should a victim ever be made to feel ashamed for making a report.

When supporting victims, staff will:

- Reassure victims that the law on child-on-child abuse is there to protect them, not criminalise them
- Regularly review decisions and actions, and update policies with lessons learnt
- Look out for potential patterns of concerning, problematic or inappropriate behaviour, and decide on a course of action where we identify any patterns
- Consider if there are wider cultural issues within the school that enabled inappropriate behaviour to occur and whether revising policies and/or providing extra staff training could minimise the risk of it happening again
- Remain alert to the possible challenges of detecting signs that a child has experienced sexual violence, and show sensitivity to their needs

Some groups are potentially more at risk. Evidence shows that girls, children with SEN and/or disabilities, and lesbian, gay, bisexual or transgender (LGBT) children are at greater risk.

Staff should be aware of the importance of:

- Challenging inappropriate behaviours
- Making clear that sexual violence and sexual harassment is not acceptable, will never be tolerated and is not an inevitable part of growing up
- Challenging physical behaviours (potentially criminal in nature), such as grabbing bottoms, breasts and genitalia, pulling down trousers, flicking bras and lifting up skirts. Dismissing or tolerating such behaviours risks normalising them

If staff have any concerns about sexual violence or sexual harassment, or a child makes a report to them, they will follow the procedures set out in section 7 of this policy, as appropriate. In particular, section 7.8 and 7.9 set out more detail about our school's approach to this type of abuse.

26.1.1 Serious violence

Indicators which may signal that a child is at risk from, or involved with, serious violent crime may include:

- Increased absence from school
- Change in friendships or relationships with older individuals or groups
- Significant decline in performance
- Signs of self-harm or a significant change in wellbeing

- Signs of assault or unexplained injuries
- Unexplained gifts or new possessions (this could indicate that the child has been approached by, or is involved with, individuals associated with criminal networks or gangs and may be at risk of criminal exploitation (see above))

Risk factors which increase the likelihood of involvement in serious violence include:

- Being male
- Having been frequently absent or permanently excluded from school
- Having experienced child maltreatment
- Having been involved in offending, such as theft or robbery
- Staff will be aware of these indicators and risk factors. If a member of staff has a concern about a children being involved in, or at risk of, serious violence, they will report this to the DSL.

26.1.2 Checking the identity and suitability of visitors

All visitors will be required to verify their identity to the satisfaction of staff. If the visitor is unknown to the setting, we will check their credentials and reason for visiting before allowing them to enter the setting. Visitors should be ready to produce identification.

Visitors are expected to sign in and wear a visitor's badge.

Visitors to the school who are visiting for a professional purpose, such as educational psychologists and school improvement officers, will be asked to show photo ID and:

- Will be asked to show their DBS certificate, which will be checked alongside their photo ID; or
- The organisation sending the professional, such as the local authority or educational psychology service, will provide prior written confirmation that an appropriate level of DBS check has been carried out (if this is provided, we will not ask to see the DBS certificate)

All other visitors, including visiting speakers, will be accompanied by a member of staff at all times. We will not invite into the school any speaker who is known to disseminate extremist views, and will carry out appropriate checks to ensure that any individual or organisation using school facilities is not seeking to disseminate extremist views or radicalise children or staff.

26.1.3 Non-collection of children

If a child is not collected at the end of the session/day, we will:

Make contact with contacts shared with us on our MIS system. If we are unable to make contact and/or there is no response the DSL will be contacted to determine next steps.

26.1.4 Missing children

Our procedures are designed to ensure that a missing child is found and returned to effective supervision as soon as possible. If a child goes missing, we will:

- In school - Use first call in school to inform that a child is missing. If not located the family will be informed.
- If outside of school contact will be made with the family first and then the school.



Appendix 4: Briefing sheet for temporary and supply staff

26.2 For supply staff and those on short contracts in Worthing High School school

While working in Worthing High School, you have a duty of care towards the children and children here. This means that at all times you should act in a way that is consistent with their safety and welfare. In addition, if at any time you have a concern about a child or child, particularly if you think they may be at risk of abuse or neglect, it is your responsibility to share that concern with the school designated safeguarding lead (DSL), who is Nick Mariosa.

This is not an exhaustive list, but you may have become concerned as a result of:

- Observing a physical injury, which you think may have been non-accidental.
- Observing something in the appearance of a child or child which suggests they are not being sufficiently well cared for.
- Observing child behaviour that leads you to be concerned about a child or child.
- A child or child telling you that they have been subjected to some form of abuse
- Observing adult behaviour that leads you to be concerned about their suitability to work with children or children.

In any of the circumstances listed here, you must write down what you saw or heard, date and sign your account, and give it to the DSL as soon as possible and no longer than 24 hours later. This may be the beginning of a legal process – it is important to understand that legal action against a perpetrator can be seriously damaged by any suggestion that the child has been led in any way.

If a child talks to you about abuse, you should follow these guidelines:

- Rather than directly questioning the child, just listen and be supportive
- Never stop a child who is freely recalling significant events, but don't push the child to tell you more than they wish.
- Make it clear that you may need to pass on information to staff in other agencies who may be able to help – do not promise confidentiality. You are obliged to share any information relating to abuse or neglect.
- Write an account of the conversation immediately, as close to verbatim as possible. Put the date and timings on it, and mention anyone else who was present. Then sign it and give your record to the DSL who should follow due process, including contacting Children's Social Care if appropriate.

The school has a policy on safeguarding children and children which you can find, together with the local procedures to be followed by all staff [here](#).

If your concern involves the DSL or a member of the senior staff, inform the head teacher and consider/discuss contacting the LADO via the [Online Portal](#)

Remember, if you have a concern, report it.