

East Surrey, West Sussex, Greater Brighton
Poster last updated February 2023



Employment

UK – 75.6%
LEP – 79.3%

Unemployment

UK – 3.7%
LEP – 3%

16–64-year-old population = 970,500
Total population = 1,569,600

Full-time salary



UK average – £33,000
LEP average – £31,992

Self-employment



11.5%

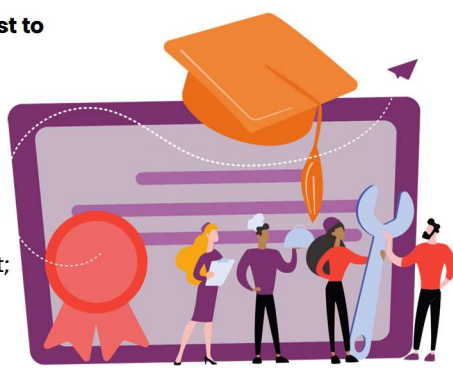
124,900 people in the region are self-employed.

Apprenticeships

There were **7,740** apprenticeship starts in the Coast to Capital LEP area between Aug 21- July 22. The top areas of work include:

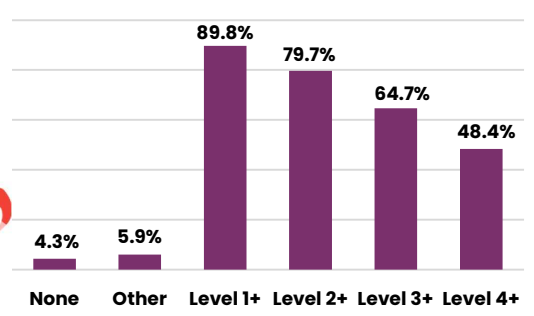
- Health, public services & care;
- Business, administration and law;
- Engineering and manufacturing technologies;
- Retail and commercial enterprise;
- Information and communication technology;
- Construction, planning and the built environment;
- Agriculture, horticulture and animal care;
- Education and training;
- Leisure, travel, and tourism;
- Arts, media, and publishing;

Plus, many more! Find local opportunities on www.apprenticeships.gov.uk



Qualification levels

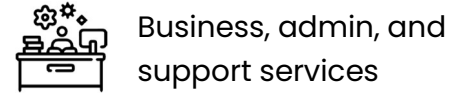
Qualification levels within the Coast to Capital LEP area



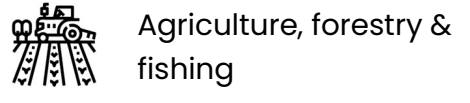
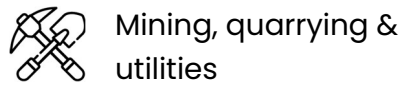
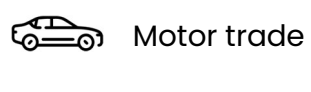
79.7% people have at least a level 2 qualification such as GCSEs or an NVQ

Where do people work right now?

Most jobs are in



Fewest jobs are in



Companies recruiting in the last 12 months*



Need careers advice? Call us on 0800 100 900, contact us online, or find us on Facebook and Twitter.
<https://nationalcareers.service.gov.uk>

LMI obtained from the Office for National Statistics and Gov.uk.

Source: ONS Annual Population Survey 12 mths to end Sept 2022 – accessed 06/02/2023

Source: ONS Population estimates – local authority based by five year age band • Source: ONS ASHE 2022

Source: LEP strategy docs • Source: Explore Education Statistic Gov UK – accessed 06/02/2023

Source: ONS Bres 2023 Top 3 sectors accessed 07/02/2023 • Source: Lightcast job postings 12 months to end Jan 2023 – excluding recruitment agencies*

